

Datasheet for ABIN7490806
anti-Endomucin antibody



[Go to Product page](#)

1 Image

Overview

Quantity:	100 µg
Target:	Endomucin (EMCN)
Reactivity:	Human
Host:	Rabbit
Clonality:	Chimeric
Conjugate:	This Endomucin antibody is un-conjugated
Application:	Flow Cytometry (FACS)

Product Details

Isotype:	IgG1
Fragment:	Fc fragment
Characteristics:	Rabbit/Human Fc chimeric IgG1
Purification:	Purified from cell culture supernatant by affinity chromatography

Target Details

Target:	Endomucin (EMCN)
Alternative Name:	EMCN (EMCN Products)
Background:	Description: Endomucin, MUC-14,EMCN is a mucin-like sialoglycoprotein that interferes with the assembly of focal adhesion complexes and inhibits interaction between cells and the extracellular matrix (Kinoshita et al., 2001 [PubMed 11418125]).[supplied by OMIM, Mar 2008]

Target Details

UniProt: [Q9ULC0](#)

Application Details

Application Notes: Flow Cyt 1:100

Restrictions: For Research Use only

Handling

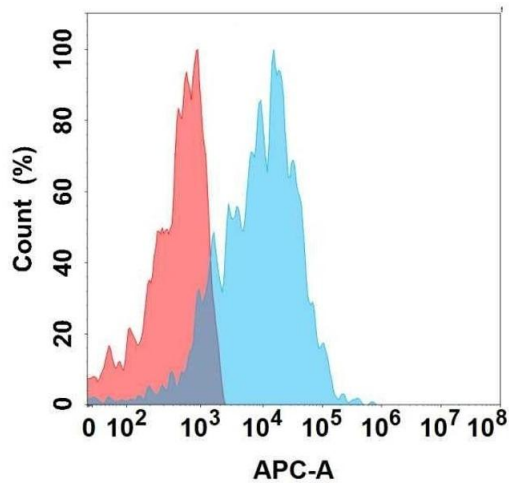
Format: Liquid

Storage: -20 °C,-80 °C

Storage Comment: Store at -20°C to -80°C for 12 months in lyophilized form. After reconstitution, if not intended for use within a month, aliquot and store at -80°C (Avoid repeated freezing and thawing).
Lyophilized proteins are shipped at ambient temperature.

Expiry Date: 12 months

Images



Flow Cytometry

Image 1. Flow cytometry analysis with Anti-EMCN on Expi293 cells transfected with human EMCN (Blue histogram) or Expi293 transfected with irrelevant protein (Red histogram).