



[Go to Product page](#)

Datasheet for ABIN7490814
anti-SIGLEC7 antibody

1 Image

Overview

Quantity:	100 µg
Target:	SIGLEC7
Reactivity:	Human
Host:	Rabbit
Clonality:	Chimeric
Conjugate:	This SIGLEC7 antibody is un-conjugated
Application:	Flow Cytometry (FACS)

Product Details

Isotype:	IgG1
Fragment:	Fc fragment
Characteristics:	Rabbit/Human Fc chimeric IgG1
Purification:	Purified from cell culture supernatant by affinity chromatography

Target Details

Target:	SIGLEC7
Alternative Name:	SIGLEC7 (SIGLEC7 Products)
Background:	AIRM-1, AIRM1, CD328, CDw328, D-siglec, p75, p75/AIRM1, QA79, SIGLEC-7, SIGLEC19P, SIGLECP2, Description: Putative adhesion molecule that mediates sialic-acid dependent binding to cells. Preferentially binds to alpha-2,3- and alpha-2,6-linked sialic acid. Also binds disialogangliosides

Target Details

(disialogalactosyl globoside, disialyl lactotetraosylceramide and disialyl GalNAc lactotetraosylceramide). The sialic acid recognition site may be masked by cis interactions with sialic acids on the same cell surface. In the immune response, may act as an inhibitory receptor upon ligand induced tyrosine phosphorylation by recruiting cytoplasmic phosphatase(s) via their SH2 domain(s) that block signal transduction through dephosphorylation of signaling molecules. Mediates inhibition of natural killer cells cytotoxicity. May play a role in hemopoiesis. Inhibits differentiation of CD34 cell precursors towards myelomonocytic cell lineage and proliferation of leukemic myeloid cells (in vitro).[UniProtKB/Swiss-Prot Function]

UniProt: [Q9Y286](#)

Application Details

Application Notes: Flow Cyt 1:100

Restrictions: For Research Use only

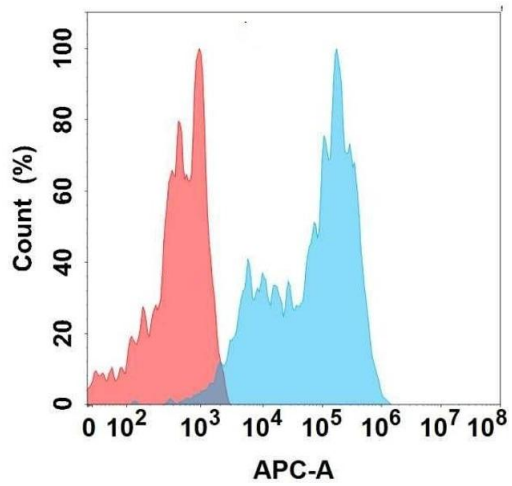
Handling

Format: Liquid

Storage: -20 °C,-80 °C

Storage Comment: Store at -20°C to -80°C for 12 months in lyophilized form. After reconstitution, if not intended for use within a month, aliquot and store at -80°C (Avoid repeated freezing and thawing). Lyophilized proteins are shipped at ambient temperature.

Expiry Date: 12 months



Flow Cytometry

Image 1. Flow cytometry analysis with Anti-SIG on Expi293 cells transfected with human SIG (Blue histogram) or Expi293 transfected with irrelevant protein (Red histogram).