

Datasheet for ABIN7490845  
**anti-CHI3L1 antibody**



[Go to Product page](#)

1 Image

## Overview

Quantity:	100 µg
Target:	CHI3L1
Reactivity:	Human
Host:	Rabbit
Clonality:	Chimeric
Application:	Flow Cytometry (FACS)

## Product Details

Isotype:	IgG1
Fragment:	Fc fragment
Characteristics:	Rabbit/Human Fc chimeric IgG1
Purification:	Purified from cell culture supernatant by affinity chromatography

## Target Details

Target:	CHI3L1
Alternative Name:	CHI3L1 ( <a href="#">CHI3L1 Products</a> )
Background:	ASRT7, CGP-39, GP-39, GP39, HC-gp39, HCGP-3P, hCGP-39, YK-40, YKL-40, YKL40, YYL-40, Description: Chitinases catalyze the hydrolysis of chitin, which is an abundant glycopolymer found in insect exoskeletons and fungal cell walls. The glycoside hydrolase 18 family of chitinases includes eight human family members. This gene encodes a glycoprotein member of the glycosyl hydrolase 18 family. The protein lacks chitinase activity and is secreted by

## Target Details

activated macrophages, chondrocytes, neutrophils and synovial cells. The protein is thought to play a role in the process of inflammation and tissue remodeling. [provided by RefSeq, Sep 2009]

UniProt: [P36222](#)

## Application Details

Application Notes: Flow Cyt 1:100

Restrictions: For Research Use only

## Handling

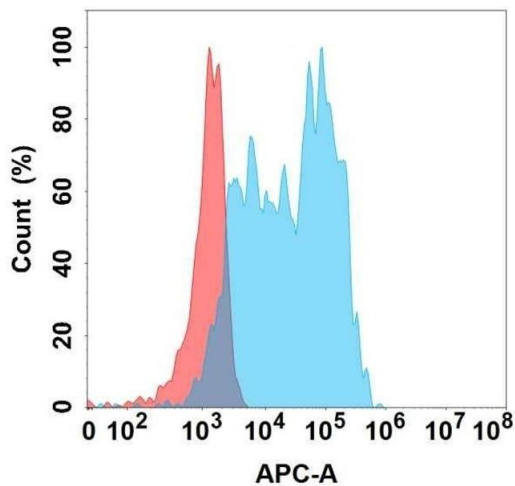
Format: Liquid

Storage: -20 °C,-80 °C

Storage Comment: Store at -20°C to -80°C for 12 months in lyophilized form. After reconstitution, if not intended for use within a month, aliquot and store at -80°C (Avoid repeated freezing and thawing).  
Lyophilized proteins are shipped at ambient temperature.

Expiry Date: 12 months

## Images



### Flow Cytometry

**Image 1.** Flow cytometry analysis with Anti-L1 on Expi293 cells transfected with human L1 (Blue histogram) or Expi293 transfected with irrelevant protein (Red histogram).