

Datasheet for ABIN7490853
anti-LI Cadherin antibody



[Go to Product page](#)

1 Image

Overview

Quantity:	100 µg
Target:	LI Cadherin
Reactivity:	Human
Host:	Rabbit
Clonality:	Chimeric
Conjugate:	This LI Cadherin antibody is un-conjugated
Application:	Flow Cytometry (FACS)

Product Details

Isotype:	IgG1
Fragment:	Fc fragment
Characteristics:	Rabbit/Human Fc chimeric IgG1
Purification:	Purified from cell culture supernatant by affinity chromatography

Target Details

Target:	LI Cadherin
Alternative Name:	CDH17 (LI Cadherin Products)
Background:	CDH16, HPT-1, HPT1, Description: This gene is a member of the cadherin superfamily, genes encoding calcium-dependent, membrane-associated glycoproteins. The encoded protein is cadherin-like, consisting of an extracellular region, containing 7 cadherin domains, and a transmembrane

Target Details

region but lacking the conserved cytoplasmic domain. The protein is a component of the gastrointestinal tract and pancreatic ducts, acting as an intestinal proton-dependent peptide transporter in the first step in oral absorption of many medically important peptide-based drugs. The protein may also play a role in the morphological organization of liver and intestine. Alternative splicing results in multiple transcript variants. [provided by RefSeq, Jan 2009]

UniProt: [Q12864](#)

Application Details

Application Notes: Flow Cyt 1:100

Restrictions: For Research Use only

Handling

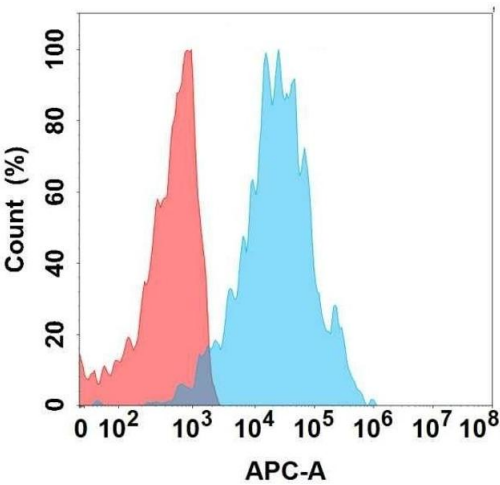
Format: Liquid

Storage: -20 °C,-80 °C

Storage Comment: Store at -20°C to -80°C for 12 months in lyophilized form. After reconstitution, if not intended for use within a month, aliquot and store at -80°C (Avoid repeated freezing and thawing).
Lyophilized proteins are shipped at ambient temperature.

Expiry Date: 12 months

Images



Flow Cytometry

Image 1. Flow cytometry analysis with Anti- on Expi293 cells transfected with human (Blue histogram) or Expi293 transfected with irrelevant protein (Red histogram).