

Datasheet for ABIN7490861
anti-FZD10 antibody



[Go to Product page](#)

1 Image

Overview

Quantity:	100 µg
Target:	FZD10
Reactivity:	Human
Host:	Rabbit
Clonality:	Chimeric
Application:	Flow Cytometry (FACS)

Product Details

Isotype:	IgG1
Fragment:	Fc fragment
Characteristics:	Rabbit/Human Fc chimeric IgG1
Purification:	Purified from cell culture supernatant by affinity chromatography

Target Details

Target:	FZD10
Alternative Name:	FZD10 (FZD10 Products)
Background:	CD350, FZ-10, Fz10, FzE7, hFz10, Description: This gene is a member of the frizzled gene family. Members of this family encode 7-transmembrane domain proteins that are receptors for the Wingless type MMTV integration site family of signaling proteins. Most frizzled receptors are coupled to the beta-catenin canonical signaling pathway. Using array analysis, expression of this intronless gene is

Target Details

significantly up-regulated in two cases of primary colon cancer. [provided by RefSeq, Jul 2008]

UniProt: [Q9ULW2](#)

Pathways: [WNT Signaling](#)

Application Details

Application Notes: Flow Cyt 1:100

Restrictions: For Research Use only

Handling

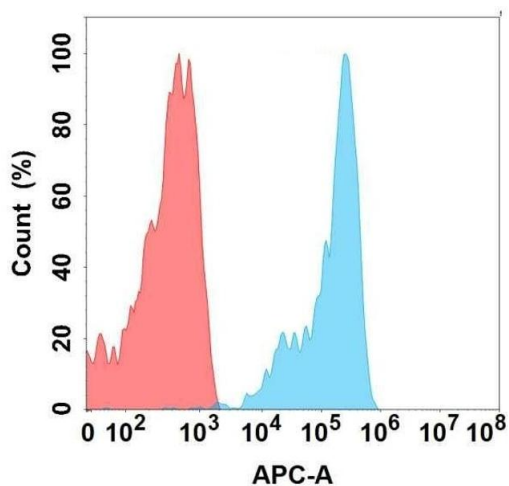
Format: Liquid

Storage: -20 °C,-80 °C

Storage Comment: Store at -20°C to -80°C for 12 months in lyophilized form. After reconstitution, if not intended for use within a month, aliquot and store at -80°C (Avoid repeated freezing and thawing).
Lyophilized proteins are shipped at ambient temperature.

Expiry Date: 12 months

Images



Flow Cytometry

Image 1. Flow cytometry analysis with Anti- on Expi293 cells transfected with human (Blue histogram) or Expi293 transfected with irrelevant protein (Red histogram).