

Datasheet for ABIN7490886

**anti-LILRB2 antibody**[Go to Product page](#)**1** Image

## Overview

|              |                                       |
|--------------|---------------------------------------|
| Quantity:    | 100 µg                                |
| Target:      | LILRB2                                |
| Reactivity:  | Human                                 |
| Host:        | Rabbit                                |
| Clonality:   | Chimeric                              |
| Conjugate:   | This LILRB2 antibody is un-conjugated |
| Application: | Flow Cytometry (FACS)                 |

## Product Details

|                  |   |
|------------------|---|
| Isotype:         | IgG1  |
| Fragment:        | Fc fragment   |
| Characteristics: | Rabbit/Human Fc chimeric IgG1                                     |
| Purification:    | Purified from cell culture supernatant by affinity chromatography |

## Target Details

|                   |  |
|-------------------|--|
| Target:           | LILRB2   |
| Alternative Name: | LILRB2 ( <a href="#">LILRB2 Products</a> )   |
| Background:       | LIR-2, ILT-4, MIR-10, CD85d,<br>Description: This gene is a member of the leukocyte immunoglobulin-like receptor (LIR) family, which is found in a gene cluster at chromosomal region 19q13.4. The encoded protein belongs to the subfamily B class of LIR receptors which contain two or four extracellular |

## Target Details

---

immunoglobulin domains, a transmembrane domain, and two to four cytoplasmic immunoreceptor tyrosine-based inhibitory motifs (ITIMs). The receptor is expressed on immune cells where it binds to MHC class I molecules on antigen-presenting cells and transduces a negative signal that inhibits stimulation of an immune response. It is thought to control inflammatory responses and cytotoxicity to help focus the immune response and limit autoreactivity. Multiple transcript variants encoding different isoforms have been found for this gene. [provided by RefSeq, Jul 2008]

---

UniProt: [Q8N423](#)

---

Pathways: [Cellular Response to Molecule of Bacterial Origin](#)

## Application Details

---

Application Notes: Flow Cyt 1:100

---

Restrictions: For Research Use only

## Handling

---

Format: Liquid

---

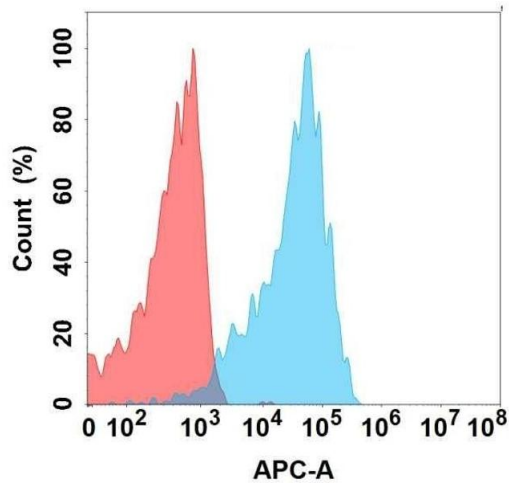
Storage: -20 °C,-80 °C

---

Storage Comment: Store at -20°C to -80°C for 12 months in lyophilized form. After reconstitution, if not intended for use within a month, aliquot and store at -80°C (Avoid repeated freezing and thawing).  
Lyophilized proteins are shipped at ambient temperature.

---

Expiry Date: 12 months



### Flow Cytometry

**Image 1.** Flow cytometry analysis with Anti-LI on Expi293 cells transfected with human LI (Blue histogram) or Expi293 transfected with irrelevant protein (Red histogram).