

Datasheet for ABIN7490894

anti-GDNF antibody[Go to Product page](#)**1** Image

Overview

Quantity:	100 µg
Target:	GDNF
Reactivity:	Human
Host:	Rabbit
Clonality:	Chimeric
Conjugate:	This GDNF antibody is un-conjugated
Application:	Flow Cytometry (FACS)

Product Details

Isotype:	IgG1
Fragment:	Fc fragment
Characteristics:	Rabbit/Human Fc chimeric IgG1
Purification:	Purified from cell culture supernatant by affinity chromatography

Target Details

Target:	GDNF
Alternative Name:	GDNF (GDNF Products)
Background:	ATF, ATF1, ATF2, HFB1-GDNF, HSCR3, Description: This gene encodes a secreted ligand of the TGF-beta (transforming growth factor-beta) superfamily of proteins. Ligands of this family bind various TGF-beta receptors leading to recruitment and activation of SMAD family transcription factors that regulate gene expression.

Target Details

The encoded preproprotein is proteolytically processed to generate each subunit of the disulfide-linked homodimer. The recombinant form of this protein, a highly conserved neurotrophic factor, was shown to promote the survival and differentiation of dopaminergic neurons in culture, and was able to prevent apoptosis of motor neurons induced by axotomy. This protein is a ligand for the product of the RET (rearranged during transfection) protooncogene. Mutations in this gene may be associated with Hirschsprung disease and Tourette syndrome. This gene encodes multiple protein isoforms that may undergo similar proteolytic processing. [provided by RefSeq, Aug 2016]

UniProt: [P39905](#)

Pathways: [RTK Signaling](#), [Synaptic Membrane](#), [Tube Formation](#), [Autophagy](#), [Smooth Muscle Cell Migration](#)

Application Details

Application Notes: Flow Cyt 1:100

Restrictions: For Research Use only

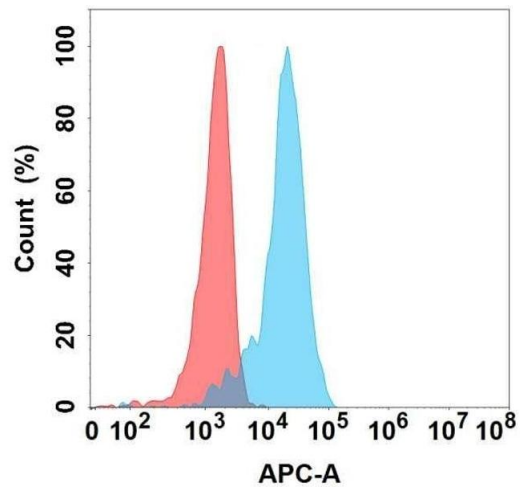
Handling

Format: Liquid

Storage: -20 °C,-80 °C

Storage Comment: Store at -20°C to -80°C for 12 months in lyophilized form. After reconstitution, if not intended for use within a month, aliquot and store at -80°C (Avoid repeated freezing and thawing).
Lyophilized proteins are shipped at ambient temperature.

Expiry Date: 12 months



Flow Cytometry

Image 1. Flow cytometry analysis with Anti-GDNF on Expi293 cells transfected with human GDNF (Blue histogram) or Expi293 transfected with irrelevant protein (Red histogram).