

Datasheet for ABIN7490895
LILRB2 Protein (AA 22-461) (His tag)



[Go to Product page](#)

2 Images

Overview

Quantity:	100 µg
Target:	LILRB2
Protein Characteristics:	AA 22-461
Origin:	Human
Source:	HEK-293 Cells
Protein Type:	Recombinant
Purification tag / Conjugate:	This LILRB2 protein is labelled with His tag.

Product Details

Purpose:	Recombinant human LILRB2 protein with C-terminal 6xHis tag
Specificity:	LILRB2 (Gln22-Val461) 6xHis tag
Characteristics:	Extracellular Domain Protein
Purification:	Purified from cell culture supernatant by affinity chromatography
Purity:	The purity of the protein is greater than 85 % as determined by SDS-PAGE and Coomassie blue staining.

Target Details

Target:	LILRB2
Alternative Name:	LILRB2 (LILRB2 Products)
Background:	This gene is a member of the leukocyte immunoglobulin-like receptor (LIR) family, which is

Target Details

found in a gene cluster at chromosomal region 19q13.4. The encoded protein belongs to the subfamily B class of LIR receptors which contain two or four extracellular immunoglobulin domains, a transmembrane domain, and two to four cytoplasmic immunoreceptor tyrosine-based inhibitory motifs (ITIMs). The receptor is expressed on immune cells where it binds to MHC class I molecules on antigen-presenting cells and transduces a negative signal that inhibits stimulation of an immune response. It is thought to control inflammatory responses and cytotoxicity to help focus the immune response and limit autoreactivity. Multiple transcript variants encoding different isoforms have been found for this gene. [provided by RefSeq, Jul 2008]

Molecular Weight: predicted molecular mass of 48.6 kDa after removal of the signal peptide. The apparent molecular mass of LILRB2-His is 55-70kDa due to glycosylation.

UniProt: [Q8N423](#)

Pathways: [Cellular Response to Molecule of Bacterial Origin](#)

Application Details

Restrictions: For Research Use only

Handling

Format: Lyophilized

Buffer: Lyophilized from sterile PBS, pH 7.4. Normally 5 % - 8 % trehalose is added as protectants before lyophilization.

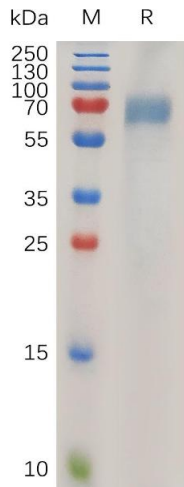
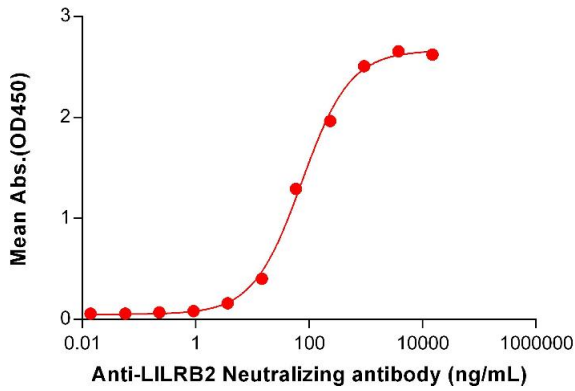
Storage: -20 °C,-80 °C

Storage Comment: Store at -20°C to -80°C for 12 months in lyophilized form. After reconstitution, if not intended for use within a month, aliquot and store at -80°C (Avoid repeated freezing and thawing).
Lyophilized proteins are shipped at ambient temperature.

Expiry Date: 12 months

Human LILRB2, His Tagged protein ELISA

0.2 µg of Human LILRB2, His tagged protein per well



ELISA

Image 1. ELISA plate pre-coated by 2 µg/mL (100 µL/well) Human LI Protein, His Tag (ABIN7455471, ABIN7490893 and ABIN7490895) can bind Anti-LI Neutralizing antibody ABIN7478031 and ABIN7491000 in a linear range of 3.66-937.50 ng/mL.

SDS-PAGE

Image 2. Human LI Protein, His Tag on SDS-PAGE under reducing condition.