

Datasheet for ABIN7490898

anti-CXCL1 antibody[Go to Product page](#)**1** Image

Overview

Quantity:	100 µg
Target:	CXCL1
Reactivity:	Human
Host:	Rabbit
Clonality:	Chimeric
Application:	Flow Cytometry (FACS)

Product Details

Isotype:	IgG1
Fragment:	Fc fragment
Characteristics:	Rabbit/Human Fc chimeric IgG1
Purification:	Purified from cell culture supernatant by affinity chromatography

Target Details

Target:	CXCL1
Alternative Name:	CXCL1 (CXCL1 Products)
Background:	FSP, GRO1, GROa, MGSA, MGSA-a, NAP-3, SCYB1, Description: This antimicrobial gene encodes a member of the CXC subfamily of chemokines. The encoded protein is a secreted growth factor that signals through the G-protein coupled receptor, CXC receptor 2. This protein plays a role in inflammation and as a chemoattractant for neutrophils. Aberrant expression of this protein is associated with the growth and progression

Target Details

of certain tumors. A naturally occurring processed form of this protein has increased chemotactic activity. Alternate splicing results in coding and non-coding variants of this gene. A pseudogene of this gene is found on chromosome 4. [provided by RefSeq, Sep 2014]

UniProt: [P09341](#)

Pathways: [Autophagy](#)

Application Details

Application Notes: Flow Cyt 1:100

Restrictions: For Research Use only

Handling

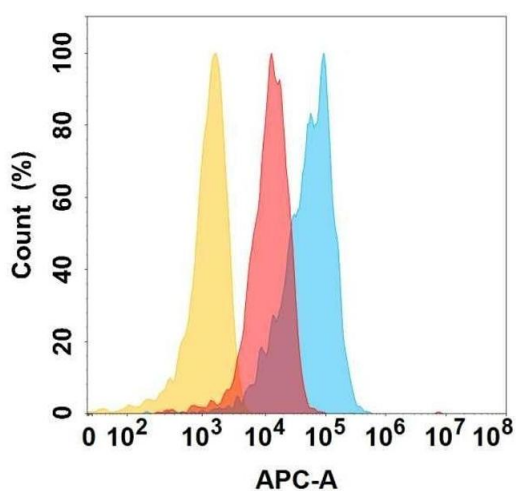
Format: Liquid

Storage: -20 °C,-80 °C

Storage Comment: Store at -20°C to -80°C for 12 months in lyophilized form. After reconstitution, if not intended for use within a month, aliquot and store at -80°C (Avoid repeated freezing and thawing).
Lyophilized proteins are shipped at ambient temperature.

Expiry Date: 12 months

Images



Flow Cytometry

Image 1. Flow cytometry analysis with Anti-C on Expi293 cells transfected with human C (Blue histogram) or Expi293 transfected with irrelevant protein (Red histogram), and Isotype antibody on Expi293 transfected with irrelevant protein (Orange histogram).