

Datasheet for ABIN7490962

Ectodysplasins A Protein (EDA) (Fc Tag)**2** Images[Go to Product page](#)

Overview

Quantity:	100 µg
Target:	Ectodysplasins A (EDA)
Origin:	Human
Source:	HEK-293 Cells
Protein Type:	Recombinant
Purification tag / Conjugate:	This Ectodysplasins A protein is labelled with Fc Tag.

Product Details

Purpose:	Recombinant Human EDA Protein with N-terminal human Fc tag
Specificity:	HFc (Glu99-Ala330) EDA (Ser160-Ser391)
Characteristics:	Extracellular Domain Protein
Purification:	Purified from cell culture supernatant by affinity chromatography
Purity:	The purity of the protein is greater than 95 % as determined by SDS-PAGE and Coomassie blue staining.

Target Details

Target:	Ectodysplasins A (EDA)
Alternative Name:	EDA (EDA Products)
Background:	The protein encoded by this gene is a type II membrane protein that can be cleaved by furin to produce a secreted form. The encoded protein, which belongs to the tumor necrosis factor family, acts as a homotrimer and may be involved in cell-cell signaling during the development

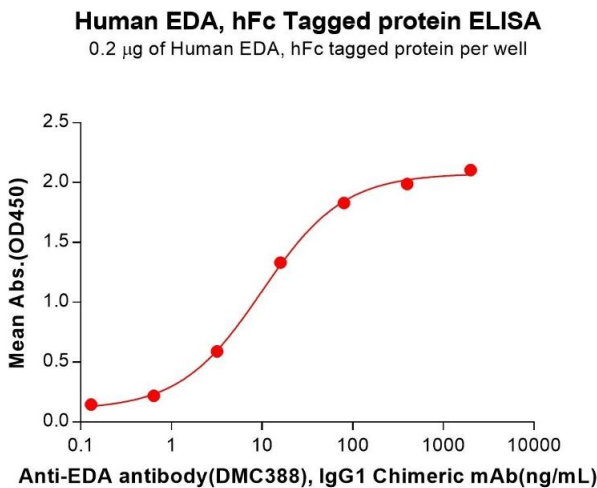
Target Details

	of ectodermal organs. Defects in this gene are a cause of ectodermal dysplasia, anhidrotic, which is also known as X-linked hypohidrotic ectodermal dysplasia. Several transcript variants encoding many different isoforms have been found for this gene. [provided by RefSeq, Jul 2008]
Molecular Weight:	predicted molecular mass of 50.3 kDa after removal of the signal peptide.The apparent molecular mass of hFc-EDA is 55-70 kDa due to glycosylation.
UniProt:	Q92838
Pathways:	Tube Formation

Application Details

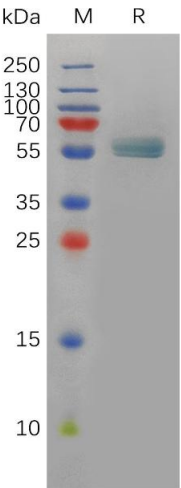
Restrictions:	For Research Use only
Handling	
Format:	Lyophilized
Buffer:	Lyophilized from sterile PBS, pH 7.4. Normally 5 % - 8 % trehalose is added as protectants before lyophilization.
Storage:	-20 °C,-80 °C
Storage Comment:	Store at -20°C to -80°C for 12 months in lyophilized form. After reconstitution, if not intended for use within a month, aliquot and store at -80°C (Avoid repeated freezing and thawing). Lyophilized proteins are shipped at ambient temperature.
Expiry Date:	12 months

Images



ELISA

Image 1. ELISA plate pre-coated by 2 µg/mL (100 µL/well) Human EDA Protein, hFc Tag (ABIN7455488, ABIN7490960 and ABIN7490962) can bind Anti-EDA antibody, IgG1 Chimeric mAb in a linear range of 3.20-80 ng/mL.



SDS-PAGE

Image 2. Human EDA Protein, hFc Tag on SDS-PAGE under reducing condition.