

Datasheet for ABIN7490970

SLC39A6 Protein (AA 29-325) (His tag)**2** Images[Go to Product page](#)

Overview

Quantity:	100 µg
Target:	SLC39A6
Protein Characteristics:	AA 29-325
Origin:	Human
Source:	HEK-293 Cells
Protein Type:	Recombinant
Purification tag / Conjugate:	This SLC39A6 protein is labelled with His tag.

Product Details

Purpose:	Recombinant human LIV-1 Protein with C-terminal 6xHis tag
Specificity:	LIV-1 (Phe29-Trp325) 6xHis tag
Characteristics:	Extracellular Domain Protein
Purification:	Purified from cell culture supernatant by affinity chromatography
Purity:	The purity of the protein is greater than 85 % as determined by SDS-PAGE and Coomassie blue staining.

Target Details

Target:	SLC39A6
Alternative Name:	LIV-1 (SLC39A6 Products)
Background:	Zinc is an essential cofactor for hundreds of enzymes. It is involved in protein, nucleic acid,

Target Details

	carbohydrate, and lipid metabolism, as well as in the control of gene transcription, growth, development, and differentiation. SLC39A6 belongs to a subfamily of proteins that show structural characteristics of zinc transporters (Taylor and Nicholson, 2003 [PubMed 12659941]).[supplied by OMIM, Mar 2008]
Molecular Weight:	predicted molecular mass of 34.4 kDa after removal of the signal peptide. The apparent molecular mass of LIV-1-His is 55-70 kDa due to glycosylation.
UniProt:	Q13433
Pathways:	Transition Metal Ion Homeostasis

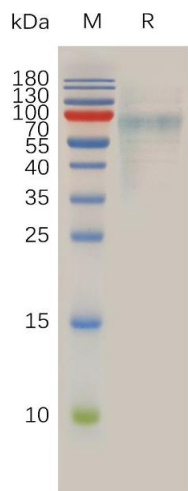
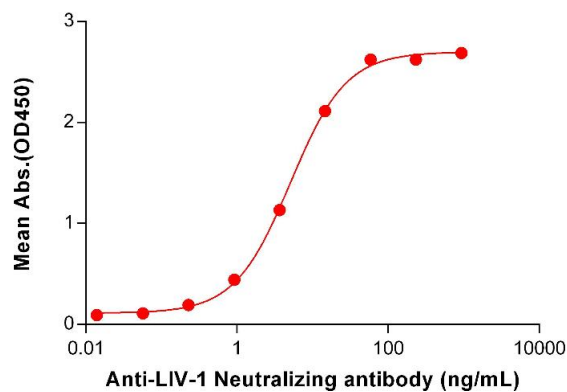
Application Details

Restrictions:	For Research Use only
---------------	-----------------------

Handling

Format:	Lyophilized
Buffer:	Lyophilized from sterile PBS, pH 7.4. Normally 5 % - 8 % trehalose is added as protectants before lyophilization.
Storage:	-20 °C,-80 °C
Storage Comment:	Store at -20°C to -80°C for 12 months in lyophilized form. After reconstitution, if not intended for use within a month, aliquot and store at -80°C (Avoid repeated freezing and thawing). Lyophilized proteins are shipped at ambient temperature.
Expiry Date:	12 months

Human LIV-1, His Tagged protein ELISA
0.2 µg of Human LIV-1, His tagged protein per well



ELISA

Image 1. ELISA plate pre-coated by 2 µg/mL (100 µL/well) Human LIV-1 Protein, His Tag (ABIN7455490, ABIN7490968 and ABIN7490970) can bind Anti-LIV-1 Neutralizing antibody ABIN7478009 and ABIN7490985 in a linear range of 0.92-58.59 ng/mL.

SDS-PAGE

Image 2. Human LIV-1 Protein, His Tag on SDS-PAGE under reducing condition.