

Datasheet for ABIN7491161  
**CCR4 Protein (AA 1-39) (mFc Tag)**



[Go to Product page](#)

2 Images

## Overview

Quantity:	100 µg
Target:	CCR4
Protein Characteristics:	AA 1-39
Origin:	Human
Source:	HEK-293 Cells
Protein Type:	Recombinant
Purification tag / Conjugate:	This CCR4 protein is labelled with mFc Tag.

## Product Details

Purpose:	Recombinant human CCR4(1-39) protein with C-terminal mouse Fc tag
Specificity:	CCR4 (1-39) (Met1-Glu39) mFc (Pro99-Lys330)
Characteristics:	Extracellular Domain Protein
Purification:	Purified from cell culture supernatant by affinity chromatography
Purity:	The purity of the protein is greater than 95 % as determined by SDS-PAGE and Coomassie blue staining.

## Target Details

Target:	CCR4
Alternative Name:	CCR4 ( <a href="#">CCR4 Products</a> )
Background:	The protein encoded by this gene belongs to the G-protein-coupled receptor family . It is a

## Target Details

receptor for the CC chemokine - MIP-1, RANTES, TARC and MCP-1. Chemokines are a group of small polypeptide, structurally related molecules that regulate cell trafficking of various types of leukocytes. The chemokines also play fundamental roles in the development, homeostasis, and function of the immune system, and they have effects on cells of the central nervous system as well as on endothelial cells involved in angiogenesis or angiostasis. [provided by RefSeq, Jul 2008]

Molecular Weight: predicted molecular mass of 30.7 kDa after removal of the signal peptide. The apparent molecular mass of CCR4(1-39)-mFc is 35-55 kDa due to glycosylation.

UniProt: [P51679](#)

## Application Details

Restrictions: For Research Use only

## Handling

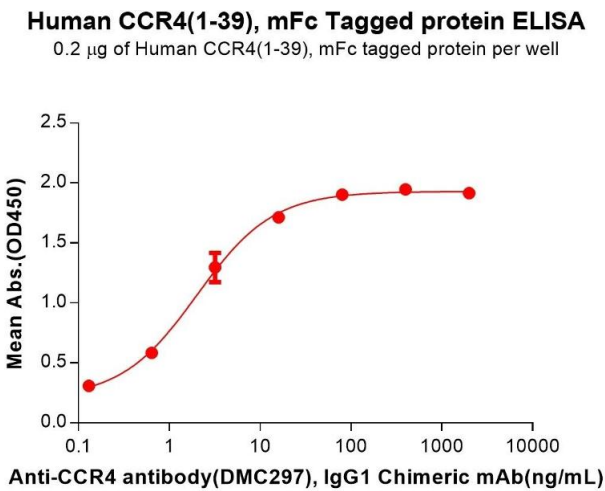
Format: Lyophilized

Buffer: Lyophilized from sterile PBS, pH 7.4. Normally 5 % - 8 % trehalose is added as protectants before lyophilization.

Storage: -20 °C,-80 °C

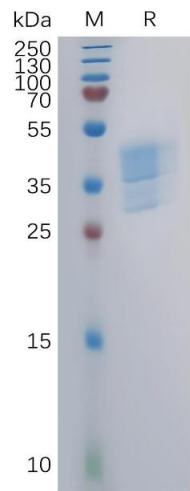
Storage Comment: Store at -20°C to -80°C for 12 months in lyophilized form. After reconstitution, if not intended for use within a month, aliquot and store at -80°C (Avoid repeated freezing and thawing).  
Lyophilized proteins are shipped at ambient temperature.

Expiry Date: 12 months



**ELISA**

**Image 1.** ELISA plate pre-coated by 2 µg/mL (100 µL/well) Human (1-39) Protein, mFc Tag (ABIN7455570, ABIN7491160 and ABIN7491161) can bind Anti- antibody, IgG1 Chimeric mAb in a linear range of 0.64-16 ng/mL.



**SDS-PAGE**

**Image 2.** Human (1-39) Protein, mFc Tag on SDS-PAGE under reducing condition.