

Datasheet for ABIN7491293

LRP6 Protein (AA 20-1370) (His tag)**2** Images[Go to Product page](#)

Overview

Quantity:	100 µg
Target:	LRP6
Protein Characteristics:	AA 20-1370
Origin:	Human
Source:	HEK-293 Cells
Protein Type:	Recombinant
Purification tag / Conjugate:	This LRP6 protein is labelled with His tag.

Product Details

Purpose:	Recombinant Human LRP6 Protein with C-terminal 6xHis tag
Specificity:	LRP6 (Ala20-Ala1370) 6xHis tag
Characteristics:	Extracellular Domain Protein
Purification:	Purified from cell culture supernatant by affinity chromatography
Purity:	The purity of the protein is greater than 85 % as determined by SDS-PAGE and Coomassie blue staining.

Target Details

Target:	LRP6
Alternative Name:	LRP6 (LRP6 Products)
Background:	This gene encodes a member of the low density lipoprotein (LDL) receptor gene family. LDL

Target Details

receptors are transmembrane cell surface proteins involved in receptor-mediated endocytosis of lipoprotein and protein ligands. The protein encoded by this gene functions as a receptor or, with Frizzled, a co-receptor for Wnt and thereby transmits the canonical Wnt/beta-catenin signaling cascade. Through its interaction with the Wnt/beta-catenin signaling cascade this gene plays a role in the regulation of cell differentiation, proliferation, and migration and the development of many cancer types. This protein undergoes gamma-secretase dependent RIP- (regulated intramembrane proteolysis) processing but the precise locations of the cleavage sites have not been determined.[provided by RefSeq, Dec 2009]

Molecular Weight: predicted molecular mass of 153.1 kDa after removal of the signal peptide. The apparent molecular mass of LRP6-His is 130-250 kDa due to glycosylation.

UniProt: [O75581](#)

Pathways: [WNT Signaling, Tube Formation](#)

Application Details

Restrictions: For Research Use only

Handling

Format: Lyophilized

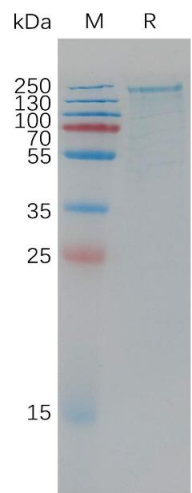
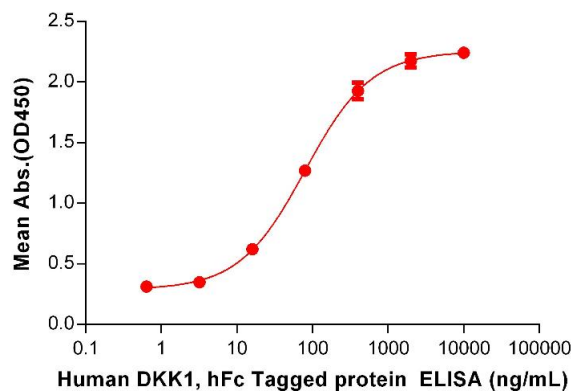
Buffer: Lyophilized from sterile PBS, pH 7.4. Normally 5 % - 8 % trehalose is added as protectants before lyophilization.

Storage: -20 °C,-80 °C

Storage Comment: Store at -20°C to -80°C for 12 months in lyophilized form. After reconstitution, if not intended for use within a month, aliquot and store at -80°C (Avoid repeated freezing and thawing).
Lyophilized proteins are shipped at ambient temperature.

Expiry Date: 12 months

Human LRP6, His Tagged protein ELISA
0.2 µg of Human LRP6, His tagged protein per well



ELISA

Image 1. ELISA plate pre-coated by 5 µg/mL (100 µL/well) Human Protein, His Tag (ABIN7455721, ABIN7491292 and ABIN7491293) can bind Human Protein, hFc Tag(ABIN7092683, ABIN7272242 and ABIN7272243) in a linear range of 16-400 ng/mL.

SDS-PAGE

Image 2. Human Protein, His Tag on SDS-PAGE under reducing condition.