

Datasheet for ABIN7491361

**PLXDC2 Protein (AA 31-453) (His tag)**[Go to Product page](#)**1** Image

## Overview

Quantity:	100 µg
Target:	PLXDC2
Protein Characteristics:	AA 31-453
Origin:	Human
Source:	HEK-293 Cells
Protein Type:	Recombinant
Purification tag / Conjugate:	This PLXDC2 protein is labelled with His tag.

## Product Details

Purpose:	Recombinant Human PLXDC2 Protein with C-terminal 6xHis tag
Specificity:	PLXDC2 (Lys31-His453) 6xHis tag
Characteristics:	Extracellular Domain Protein
Purification:	Purified from cell culture supernatant by affinity chromatography
Purity:	The purity of the protein is greater than 85 % as determined by SDS-PAGE and Coomassie blue staining.

## Target Details

Target:	PLXDC2
Alternative Name:	PLXDC2 ( <a href="#">PLXDC2 Products</a> )
Background:	May play a role in tumor angiogenesis.[UniProtKB/Swiss-Prot Function]

## Target Details

Molecular Weight: predicted molecular mass of 48.7 kDa after removal of the signal peptide. The apparent molecular mass of PLXDC2-His is 55-100 kDa due to glycosylation.

UniProt: [Q6UX71](#)

## Application Details

Restrictions: For Research Use only

## Handling

Format: Lyophilized

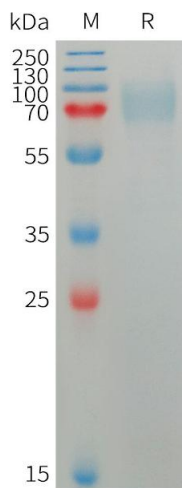
Buffer: Lyophilized from sterile PBS, pH 7.4. Normally 5 % - 8 % trehalose is added as protectants before lyophilization.

Storage: -20 °C, -80 °C

Storage Comment: Store at -20°C to -80°C for 12 months in lyophilized form. After reconstitution, if not intended for use within a month, aliquot and store at -80°C (Avoid repeated freezing and thawing).  
Lyophilized proteins are shipped at ambient temperature.

Expiry Date: 12 months

## Images



### SDS-PAGE

**Image 1.** Human PL Protein, His Tag on SDS-PAGE under reducing condition.