

Datasheet for ABIN7491393  
**LYPD3 Protein (AA 31-325) (His tag)**



[Go to Product page](#)

1 Image

## Overview

Quantity:	100 µg
Target:	LYPD3
Protein Characteristics:	AA 31-325
Origin:	Human
Source:	HEK-293 Cells
Protein Type:	Recombinant
Purification tag / Conjugate:	This LYPD3 protein is labelled with His tag.

## Product Details

Purpose:	Recombinant Human LYPD3(31-325) Protein with C-terminal 6xHis tag
Specificity:	LYPD3 (Leu31-Gly325) 6xHis tag
Characteristics:	Extracellular Domain Protein
Purification:	Purified from cell culture supernatant by affinity chromatography
Purity:	The purity of the protein is greater than 85 % as determined by SDS-PAGE and Coomassie blue staining.

## Target Details

Target:	LYPD3
Alternative Name:	LYPD3 ( <a href="#">LYPD3 Products</a> )
Background:	Supports cell migration. May be involved in urothelial cell-matrix interactions. May be involved

## Target Details

in tumor progression.[UniProtKB/Swiss-Prot Function]

Molecular Weight: predicted molecular mass of 31.7 kDa after removal of the signal peptide. The apparent molecular mass of LYPD3(31-325)-His is 35-130 kDa due to glycosylation.

UniProt: [O95274](#)

## Application Details

Restrictions: For Research Use only

## Handling

Format: Lyophilized

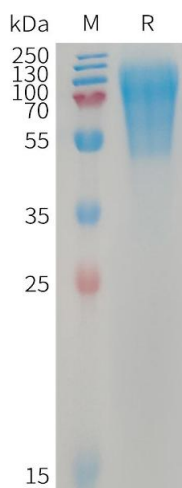
Buffer: Lyophilized from sterile PBS, pH 7.4. Normally 5 % - 8 % trehalose is added as protectants before lyophilization.

Storage: -20 °C,-80 °C

Storage Comment: Store at -20°C to -80°C for 12 months in lyophilized form. After reconstitution, if not intended for use within a month, aliquot and store at -80°C (Avoid repeated freezing and thawing).  
Lyophilized proteins are shipped at ambient temperature.

Expiry Date: 12 months

## Images



### SDS-PAGE

**Image 1.** Human L(31-325) Protein, His Tag on SDS-PAGE under reducing condition.