

Datasheet for ABIN7491421

**LY6H Protein (AA 26-115) (Fc Tag)**[Go to Product page](#)**1** Image

## Overview

Quantity:	100 µg
Target:	LY6H
Protein Characteristics:	AA 26-115
Origin:	Human
Source:	HEK-293 Cells
Protein Type:	Recombinant
Purification tag / Conjugate:	This LY6H protein is labelled with Fc Tag.

## Product Details

Purpose:	Recombinant Human LY6H Protein with C-terminal human Fc tag
Specificity:	LY6H (Leu26-Gly115) hFc (Glu99-Ala330)
Characteristics:	Extracellular Domain Protein
Purification:	Purified from cell culture supernatant by affinity chromatography
Purity:	The purity of the protein is greater than 95 % as determined by SDS-PAGE and Coomassie blue staining.

## Target Details

Target:	LY6H
Alternative Name:	LY6H ( <a href="#">LY6H Products</a> )
Background:	Believed to act as a modulator of nicotinic acetylcholine receptors (nAChRs) activity. In vitro

Target Details

	inhibits alpha-3:beta-4-containing nAChRs maximum response. May play a role in the intracellular trafficking of alpha-7-containing nAChRs and may inhibit their expression at the cell surface. Seems to inhibit alpha-7/CHRNA7 signaling in hippocampal neurons.[UniProtKB/Swiss-Prot Function]
Molecular Weight:	predicted molecular mass of 36.0 kDa after removal of the signal peptide. The apparent molecular mass of LY6H-hFc is 35-55 kDa due to glycosylation.
UniProt:	<a href="#">O94772</a>

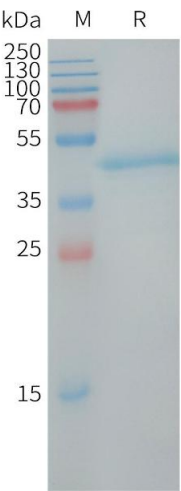
Application Details

Restrictions:	For Research Use only
---------------	-----------------------

Handling

Format:	Lyophilized
Buffer:	Lyophilized from sterile PBS, pH 7.4. Normally 5 % - 8 % trehalose is added as protectants before lyophilization.
Storage:	-20 °C,-80 °C
Storage Comment:	Store at -20°C to -80°C for 12 months in lyophilized form. After reconstitution, if not intended for use within a month, aliquot and store at -80°C (Avoid repeated freezing and thawing). Lyophilized proteins are shipped at ambient temperature.
Expiry Date:	12 months

Images



**SDS-PAGE**

**Image 1.** Human LY6H Protein, hFc Tag on SDS-PAGE under reducing condition.