

Datasheet for ABIN7491441

**IgE Protein (AA 1-428) (His tag)**[Go to Product page](#)**1** Image

## Overview

Quantity:	100 µg
Target:	IgE
Protein Characteristics:	AA 1-428
Origin:	Human
Source:	HEK-293 Cells
Protein Type:	Recombinant
Purification tag / Conjugate:	This IgE protein is labelled with His tag.

## Product Details

Purpose:	Recombinant Human IGHE Protein with C-terminal 6xHis tag
Specificity:	IGHE (Ala1-Lys428) 6xHis tag
Characteristics:	Extracellular Domain Protein
Purification:	Purified from cell culture supernatant by affinity chromatography
Purity:	The purity of the protein is greater than 85 % as determined by SDS-PAGE and Coomassie blue staining.

## Target Details

Target:	IgE
Alternative Name:	IgHE ( <a href="#">IgE Products</a> )
Background:	Predicted to enable antigen binding activity and immunoglobulin receptor binding activity.

## Target Details

Predicted to be involved in several processes, including activation of immune response, defense response to other organism, and phagocytosis. Predicted to be located in extracellular region. Predicted to be part of immunoglobulin complex, circulating. Predicted to be active in external side of plasma membrane. [provided by Alliance of Genome Resources, Apr 2022]

Molecular Weight: predicted molecular mass of 47.8 kDa after removal of the signal peptide.

UniProt: [P01854](#)

## Application Details

Restrictions: For Research Use only

## Handling

Format: Lyophilized

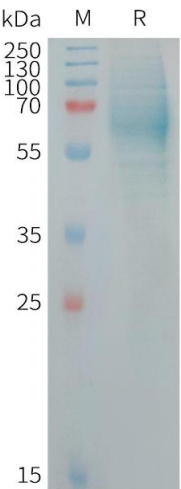
Buffer: Lyophilized from sterile PBS, pH 7.4. Normally 5 % - 8 % trehalose is added as protectants before lyophilization.

Storage: -20 °C,-80 °C

Storage Comment: Store at -20°C to -80°C for 12 months in lyophilized form. After reconstitution, if not intended for use within a month, aliquot and store at -80°C (Avoid repeated freezing and thawing).  
Lyophilized proteins are shipped at ambient temperature.

Expiry Date: 12 months

## Images



### SDS-PAGE

**Image 1.** Human IGHE Protein, His Tag on SDS-PAGE under reducing condition.