

Datasheet for ABIN7491473
CPM Protein (AA 18-422) (His tag)



[Go to Product page](#)

1 Image

Overview

Quantity:	100 µg
Target:	CPM
Protein Characteristics:	AA 18-422
Origin:	Human
Source:	HEK-293 Cells
Protein Type:	Recombinant
Purification tag / Conjugate:	This CPM protein is labelled with His tag.

Product Details

Purpose:	Recombinant Human CPM Protein with C-terminal 6xHis tag
Specificity:	CPM (Leu18-His422) 6xHis tag
Characteristics:	Extracellular Domain Protein
Purification:	Purified from cell culture supernatant by affinity chromatography
Purity:	The purity of the protein is greater than 85 % as determined by SDS-PAGE and Coomassie blue staining.

Target Details

Target:	CPM
Alternative Name:	CPM (CPM Products)
Background:	The protein encoded by this gene is a membrane-bound arginine/lysine carboxypeptidase. Its

Target Details

expression is associated with monocyte to macrophage differentiation. This encoded protein contains hydrophobic regions at the amino and carboxy termini and has 6 potential asparagine-linked glycosylation sites. The active site residues of carboxypeptidases A and B are conserved in this protein. Three alternatively spliced transcript variants encoding the same protein have been described for this gene. [provided by RefSeq, Jul 2008]

Molecular Weight: predicted molecular mass of 47.1 kDa after removal of the signal peptide. The apparent molecular mass of CPM-His is 35-55 kDa due to glycosylation.

UniProt: [P14384](#)

Application Details

Restrictions: For Research Use only

Handling

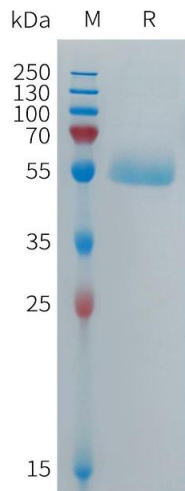
Format: Lyophilized

Buffer: Lyophilized from sterile PBS, pH 7.4. Normally 5 % - 8 % trehalose is added as protectants before lyophilization.

Storage: -20 °C,-80 °C

Storage Comment: Store at -20°C to -80°C for 12 months in lyophilized form. After reconstitution, if not intended for use within a month, aliquot and store at -80°C (Avoid repeated freezing and thawing).
Lyophilized proteins are shipped at ambient temperature.

Expiry Date: 12 months



SDS-PAGE

Image 1. Human CPM Protein, His Tag on SDS-PAGE under reducing condition.