

Datasheet for ABIN7491967

Insulin Protein (INS)**1** Image[Go to Product page](#)

Overview

Quantity:	100 mg
Target:	Insulin (INS)
Origin:	Human
Source:	Yeast
Protein Type:	Recombinant
Application:	Western Blotting (WB), ELISA

Product Details

Purity:	Greater than 95 % by SDS-PAGE gel analyses
Sterility:	0.2 µm filtered

Target Details

Target:	Insulin (INS)
Alternative Name:	Insulin (INS Products)
Background:	IDDM, IDDM1, IDDM2, ILPR, ins, INS_HUMAN, Insulin A chain, Insulin B chain, IRDN, MODY10, Preproinsulin, Proinsulin, Proinsulin precursor
Molecular Weight:	5.8 kDa
UniProt:	P01308
Pathways:	NF-kappaB Signaling , RTK Signaling , Positive Regulation of Peptide Hormone Secretion , Peptide Hormone Metabolism , Hormone Activity , Carbohydrate Homeostasis , ER-Nucleus Signaling , Regulation of Carbohydrate Metabolic Process , Feeding Behaviour , Autophagy , Negative

Target Details

Regulation of intrinsic apoptotic Signaling, Brown Fat Cell Differentiation, Positive Regulation of fat Cell Differentiation

Application Details

Application Notes: Optimal working dilution should be determined by the investigator.

Restrictions: For Research Use only

Handling

Format: Lyophilized

Reconstitution: Centrifuge the vial at 10,000 rpm for 1 minute, reconstitute at 200 µg/mL in sterile distilled water by gentle pipetting 2-3 times, don't vortex

Buffer: Lyophilized from a 0.2 µm filtered solution in 10 mM Hepes, 500 mM NaCl with 5 % trehalose and 0.06 % proclin, pH 7.4

Preservative: ProClin

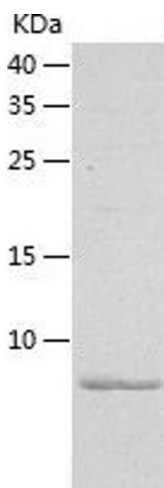
Precaution of Use: This product contains ProClin: a POISONOUS AND HAZARDOUS SUBSTANCE which should be handled by trained staff only.

Storage: 4 °C, -20 °C

Storage Comment: -20°C for 12 months as lyophilized, 2-8°C for 1 month under sterile conditions after reconstitution

Expiry Date: 12 months

Images



Western Blotting

Image 1.