

Datasheet for ABIN749423  
**anti-SIGLEC10 antibody (AA 321-420)**[Go to Product page](#)

## 1 Image

## Overview

Quantity:	100 µL
Target:	SIGLEC10
Binding Specificity:	AA 321-420
Reactivity:	Human, Rat
Host:	Rabbit
Clonality:	Polyclonal
Conjugate:	This SIGLEC10 antibody is un-conjugated
Application:	Western Blotting (WB), ELISA

## Product Details

Immunogen:	KLH conjugated synthetic peptide derived from human SIGLEC10
Isotype:	IgG
Cross-Reactivity:	Human, Mouse, Rat
Purification:	Purified by Protein A.

## Target Details

Target:	SIGLEC10
Alternative Name:	SIGLEC10 ( <a href="#">SIGLEC10 Products</a> )
Background:	Synonyms: PRO940, mSiglec G, Sialic acid binding Ig like lectin 10, Sialic acid binding Ig like lectin 10, sialic acid binding Ig like lectin 10 Ig like lectin 7, sialic acid binding Ig like lectin G,

## Target Details

Sialic acid binding Immunoglobulin like lectin 10, SIGLEC 10, Siglec G, siglec like gene 2, Siglec like protein 2, Siglec like protein 2, Siglecg, SLG2.

Background: SIGLEC10 is a putative adhesion molecule that mediates sialic-acid dependent binding to cells. It preferentially binds to alpha2,3- or 2,6-linked sialic acid. The sialic acid recognition site may be masked by cis interactions with sialic acids on the same cell surface. In the immune response, may act as an inhibitory receptor upon ligand induced tyrosine phosphorylation by recruiting cytoplasmic phosphatase(s) via their SH2 domain(s) that block signal transduction through dephosphorylation of signaling molecules. SIGLEC10 interacts with PTPN6/SHP-1 upon phosphorylation. The protein is expressed by peripheral blood leukocytes (eosinophils, monocytes and a natural killer cell subpopulation).

Gene ID: 89790

UniProt: [Q96LC7](#)

## Application Details

Application Notes:

- WB 1:300-5000
- ELISA 1:500-1000
- IHC-P 1:200-400
- IHC-F 1:100-500
- IF(IHC-P) 1:50-200
- IF(IHC-F) 1:50-200
- IF(ICC) 1:50-200
- ICC 1:100-500

Restrictions: For Research Use only

## Handling

Format: Liquid

Concentration: 1 µg/µL

Buffer: 0.01M TBS( pH 7.4) with 1 % BSA, 0.02 % Proclin300 and 50 % Glycerol.

Preservative: ProClin

Precaution of Use: This product contains ProClin: a POISONOUS AND HAZARDOUS SUBSTANCE, which should be handled by trained staff only.

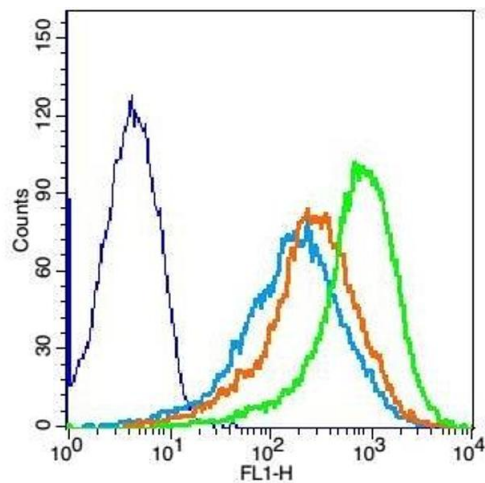
Storage: 4 °C,-20 °C

## Handling

Storage Comment: Shipped at 4°C. Store at -20°C for one year. Avoid repeated freeze/thaw cycles.

Expiry Date: 12 months

## Images



### Flow Cytometry

**Image 1.** Mouse splenocytes probed with Rabbit Anti-SIGLEC10 Polyclonal Antibody, Unconjugated at 3ug for 30 minutes followed by incubation with a conjugated secondary -FITC (green) for 30 minutes compared to control cells (blue), secondary only (light blue) and isotype control (orange).