

Datasheet for ABIN749468  
**anti-SLAMF1 antibody (AA 231-335)**[Go to Product page](#)

## 3 Images

## Overview

Quantity:	100 µL
Target:	SLAMF1
Binding Specificity:	AA 231-335
Reactivity:	Mouse, Rat
Host:	Rabbit
Clonality:	Polyclonal
Conjugate:	This SLAMF1 antibody is un-conjugated
Application:	Western Blotting (WB), ELISA, Immunofluorescence (Cultured Cells) (IF (cc)), Immunofluorescence (Paraffin-embedded Sections) (IF (p)), Immunohistochemistry (Paraffin-embedded Sections) (IHC (p)), Immunohistochemistry (Frozen Sections) (IHC (fro))

## Product Details

Immunogen:	KLH conjugated synthetic peptide derived from human CD150
Isotype:	IgG
Cross-Reactivity:	Mouse, Rat
Predicted Reactivity:	Human,Dog,Cow,Sheep,Pig,Horse
Purification:	Purified by Protein A.

## Target Details

Target:	SLAMF1
---------	--------

## Target Details

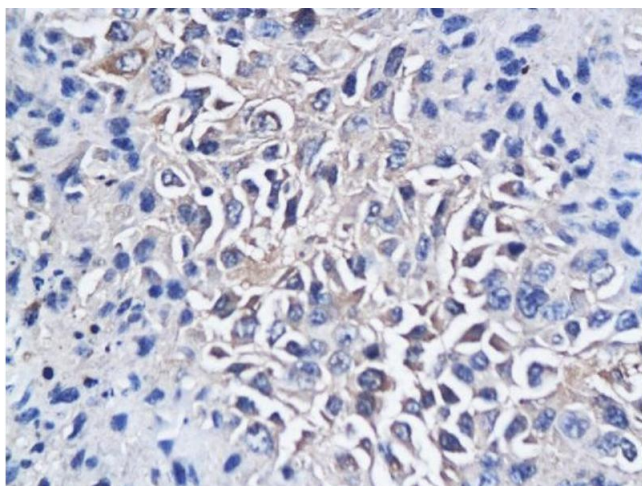
Alternative Name:	CD150 ( <a href="#">SLAMF1 Products</a> )
Background:	<p>Synonyms: SLAM, CD150, CDw150, Signaling lymphocytic activation molecule, IPO-3, SLAMF1</p> <p>Background: High-affinity self-ligand important in bidirectional T-cell to B-cell stimulation.</p> <p>SLAM-induced signal-transduction events in T-lymphocytes are different from those in B-cells.</p> <p>Two modes of SLAM signaling are likely to exist: one in which the inhibitor SH2D1A acts as a negative regulator and another in which protein-tyrosine phosphatase 2C (PTPN11)-dependent signal transduction operates.</p>
Gene ID:	6504
UniProt:	<a href="#">Q13291</a>

## Application Details

Application Notes:	<p>WB 1:300-5000</p> <p>ELISA 1:500-1000</p> <p>IHC-P 1:200-400</p> <p>IHC-F 1:100-500</p> <p>IF(IHC-P) 1:50-200</p> <p>IF(IHC-F) 1:50-200</p> <p>IF(ICC) 1:50-200</p>
Restrictions:	For Research Use only

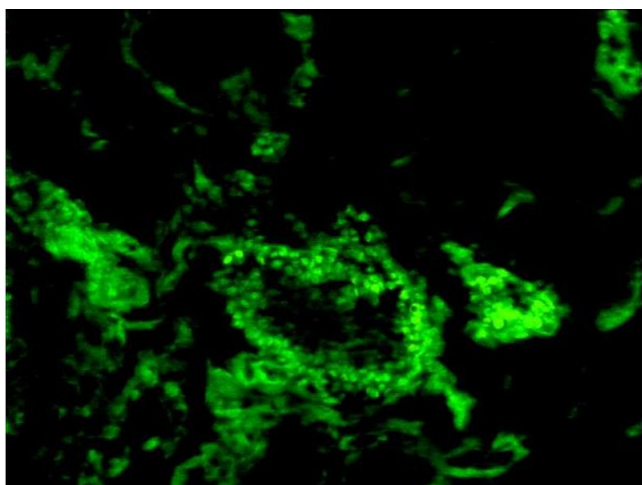
## Handling

Format:	Liquid
Concentration:	1 µg/µL
Buffer:	0.01M TBS( pH 7.4) with 1 % BSA, 0.02 % Proclin300 and 50 % Glycerol.
Preservative:	ProClin
Precaution of Use:	This product contains ProClin: a POISONOUS AND HAZARDOUS SUBSTANCE, which should be handled by trained staff only.
Storage:	4 °C,-20 °C
Storage Comment:	Shipped at 4°C. Store at -20°C for one year. Avoid repeated freeze/thaw cycles.
Expiry Date:	12 months



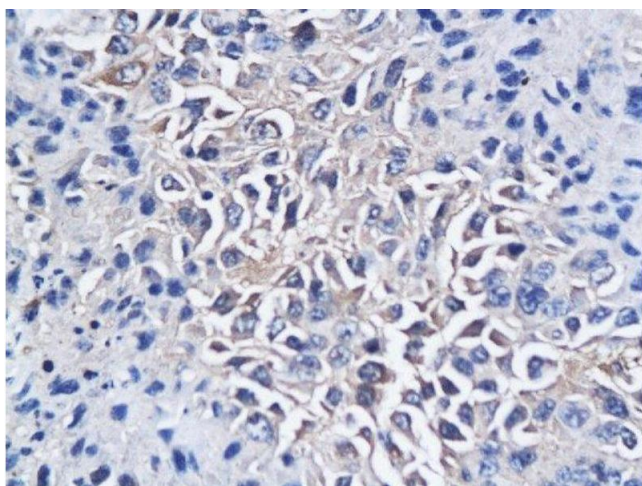
#### Immunohistochemistry

**Image 1.** Formalin-fixed and paraffin embedded mouse hepatic tumor labeled with Anti-CD150/SLAMF1 Polyclonal Antibody, Unconjugated (ABIN749468) followed by conjugation to the secondary antibody and DAB staining



#### Immunofluorescence

**Image 2.** Formalin-fixed and paraffin-embedded human breast cancer labeled with Anti-CD150/SLAMF1 Polyclonal Antibody, Unconjugated (ABIN749468) 1:200, overnight at 4°C, The secondary antibody was Goat Anti-Rabbit IgG, FITC conjugated used at 1:200 dilution for 40 minutes at 37°C.



#### Immunohistochemistry (Paraffin-embedded Sections)

**Image 3.** Formalin-fixed and paraffin embedded mouse hepatic tumor labeled with Anti-CD150/SLAMF1 Polyclonal Antibody, Unconjugated followed by conjugation to the secondary antibody and DAB staining