

Datasheet for ABIN749573

**anti-TLR6 antibody (AA 301-400)**

8 Images

1 Publication

[Go to Product page](#)

## Overview

Quantity:	100 µL
Target:	TLR6
Binding Specificity:	AA 301-400
Reactivity:	Human, Mouse, Rat
Host:	Rabbit
Clonality:	Polyclonal
Conjugate:	This TLR6 antibody is un-conjugated
Application:	Western Blotting (WB), ELISA, Flow Cytometry (FACS), Immunohistochemistry (Paraffin-embedded Sections) (IHC (p)), Immunohistochemistry (Frozen Sections) (IHC (fro)), Immunofluorescence (Paraffin-embedded Sections) (IF (p)), Immunofluorescence (Cultured Cells) (IF (cc))

## Product Details

Immunogen:	KLH conjugated synthetic peptide derived from human TLR6
Isotype:	IgG
Cross-Reactivity:	Human, Mouse, Rat
Predicted Reactivity:	Pig,Horse
Purification:	Purified by Protein A.

## Target Details

Target:	TLR6
---------	------

## Target Details

Alternative Name:	TLR6 ( <a href="#">TLR6 Products</a> )
Background:	<p>Synonyms: CD286, Toll-like receptor 6, TLR6</p> <p>Background: Participates in the innate immune response to Gram-positive bacteria and fungi. Specifically recognizes diacylated and, to a lesser extent, triacylated lipopeptides. Acts via MYD88 and TRAF6, leading to NF-kappa-B activation, cytokine secretion and the inflammatory response. Recognizes mycoplasmal macrophage-activating lipopeptide-2kD (MALP-2), soluble tuberculosis factor (STF), phenol-soluble modulins (PSM) and B.burgdorferi outer surface protein A lipoprotein (OspA-L) cooperatively with TLR2. In complex with TLR4, promotes sterile inflammation in monocytes/macrophages in response to oxidized low-density lipoprotein (oxLDL) or amyloid-beta 42. In this context, the initial signal is provided by oxLDL- or amyloid-beta 42-binding to CD36. This event induces the formation of a heterodimer of TLR4 and TLR6, which is rapidly internalized and triggers inflammatory response, leading to the NF-kappa-B-dependent production of CXCL1, CXCL2 and CCL9 cytokines, via MYD88 signaling pathway, and CCL5 cytokine, via TICAM1 signaling pathway, as well as IL1B secretion.</p>
Gene ID:	10333
UniProt:	<a href="#">Q9Y2C9</a>
Pathways:	<a href="#">TLR Signaling</a> , <a href="#">Activation of Innate immune Response</a> , <a href="#">Cellular Response to Molecule of Bacterial Origin</a> , <a href="#">Toll-Like Receptors Cascades</a>

## Application Details

Application Notes:	WB 1:300-5000 ELISA 1:500-1000 FCM 1:20-100 IHC-P 1:200-400 IHC-F 1:100-500 IF(IHC-P) 1:50-200 IF(IHC-F) 1:50-200 IF(ICC) 1:50-200
Restrictions:	For Research Use only

## Handling

Format:	Liquid
Concentration:	1 µg/µL

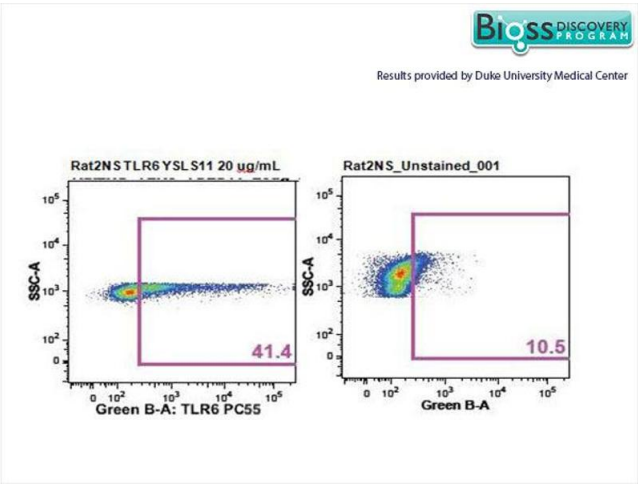
## Handling

Buffer:	0.01M TBS( pH 7.4) with 1 % BSA, 0.02 % Proclin300 and 50 % Glycerol.
Preservative:	ProClin
Precaution of Use:	This product contains ProClin: a POISONOUS AND HAZARDOUS SUBSTANCE, which should be handled by trained staff only.
Storage:	4 °C,-20 °C
Storage Comment:	Shipped at 4°C. Store at -20°C for one year. Avoid repeated freeze/thaw cycles.
Expiry Date:	12 months

## Publications

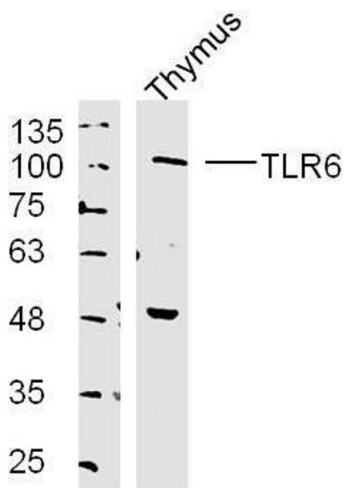
Product cited in:	Shmuel-Galia, Aychek, Fink, Porat, Zarmi, Bernshtein, Brenner, Jung, Shai: "Neutralization of pro-inflammatory monocytes by targeting TLR2 dimerization ameliorates colitis." in: <b>The EMBO journal</b> , Vol. 35, Issue 6, pp. 685-98, (2016) ( <a href="#">PubMed</a> ).
-------------------	--

## Images



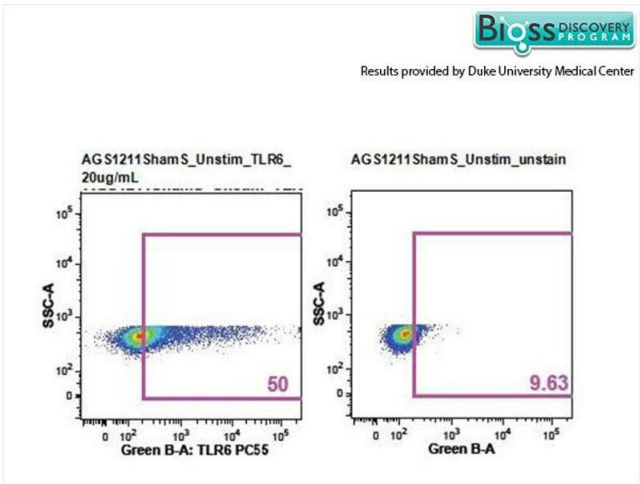
### Flow Cytometry

**Image 1.** Rat splenocytes stained with Anti- TLR6/CD286 Polyclonal Antibody, PE-CY5.5 Conjugated at 1:25



Western Blotting

**Image 2.** Mouse thymus lysates probed with TLR6 Polyclonal Antibody, unconjugated at 1:300 overnight at 4°C followed by a conjugated secondary antibody at 1:10000 for 90 minutes at 37°C.



Flow Cytometry

**Image 3.** Rat splenocytes stained with Anti- TLR6/CD286 Polyclonal Antibody, PE-CY5.5 Conjugated at 1:25.

Please check the [product details page](#) for more images. Overall 8 images are available for ABIN749573.