



[Go to Product page](#)

Datasheet for ABIN749648  
**anti-MCM5 antibody (AA 651-734)**

1 Image

Overview

Quantity:	100 µL
Target:	MCM5
Binding Specificity:	AA 651-734
Reactivity:	Human
Host:	Rabbit
Clonality:	Polyclonal
Conjugate:	This MCM5 antibody is un-conjugated
Application:	Western Blotting (WB), ELISA, Immunohistochemistry (Paraffin-embedded Sections) (IHC (p)), Immunofluorescence (Cultured Cells) (IF (cc)), Immunofluorescence (Paraffin-embedded Sections) (IF (p)), Immunohistochemistry (Frozen Sections) (IHC (fro))

Product Details

Immunogen:	KLH conjugated synthetic peptide derived from human MCM5
Isotype:	IgG
Cross-Reactivity:	Human
Predicted Reactivity:	Mouse,Rat,Dog,Cow,Horse,Rabbit
Purification:	Purified by Protein A.

Target Details

Target:	MCM5
---------	------

## Target Details

---

Alternative Name: MCM5 ([MCM5 Products](#))

---

Background: Synonyms: CDC46, P1-CDC46, DNA replication licensing factor MCM5, CDC46 homolog, MCM5  
Background: Acts as component of the MCM2-7 complex (MCM complex) which is the putative replicative helicase essential for 'once per cell cycle' DNA replication initiation and elongation in eukaryotic cells. The active ATPase sites in the MCM2-7 ring are formed through the interaction surfaces of two neighboring subunits such that a critical structure of a conserved arginine finger motif is provided in trans relative to the ATP-binding site of the Walker A box of the adjacent subunit. The six ATPase active sites, however, are likely to contribute differentially to the complex helicase activity (By similarity). Interacts with MCMBP.

---

Gene ID: 4174

---

UniProt: [P33992](#)

---

Pathways: [DNA Damage Repair](#), [Mitotic G1-G1/S Phases](#), [DNA Replication](#), [Chromatin Binding](#), [Synthesis of DNA](#)

---

## Application Details

---

Application Notes: WB 1:300-5000  
ELISA 1:500-1000  
IHC-P 1:200-400  
IHC-F 1:100-500  
IF(IHC-P) 1:50-200  
IF(IHC-F) 1:50-200  
IF(ICC) 1:50-200

---

Restrictions: For Research Use only

---

## Handling

---

Format: Liquid

---

Concentration: 1 µg/µL

---

Buffer: 0.01M TBS( pH 7.4) with 1 % BSA, 0.02 % Proclin300 and 50 % Glycerol.

---

Preservative: ProClin

---

Precaution of Use: This product contains ProClin: a POISONOUS AND HAZARDOUS SUBSTANCE, which should be handled by trained staff only.

---

## Handling

---

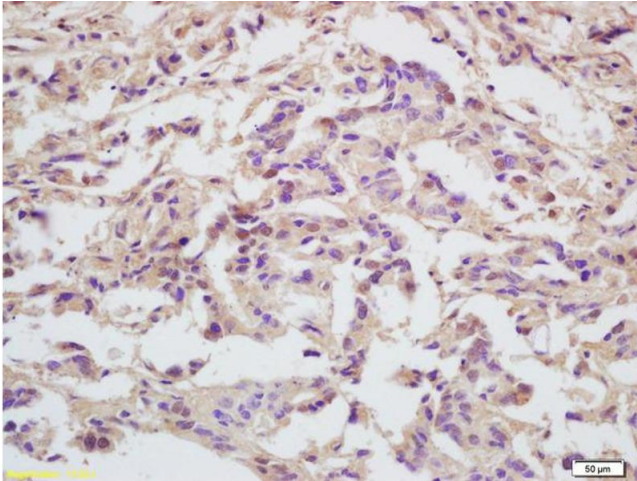
Storage: 4 °C, -20 °C

Storage Comment: Shipped at 4°C. Store at -20°C for one year. Avoid repeated freeze/thaw cycles.

Expiry Date: 12 months

## Images

---



### Immunohistochemistry

**Image 1.** Formalin-fixed and paraffin embedded human gastric carcinoma labeled with Anti-MCM5 Polyclonal Antibody, Unconjugated (ABIN749648) at 1:200 followed by conjugation to the secondary antibody and DAB staining