

Datasheet for ABIN750113
anti-CENPA antibody (AA 65-140)[Go to Product page](#)

2 Images

Overview

Quantity:	100 µL
Target:	CENPA
Binding Specificity:	AA 65-140
Reactivity:	Human
Host:	Rabbit
Clonality:	Polyclonal
Conjugate:	This CENPA antibody is un-conjugated
Application:	Western Blotting (WB), ELISA, Immunohistochemistry (Paraffin-embedded Sections) (IHC (p))

Product Details

Immunogen:	KLH conjugated synthetic peptide derived from human CENPA
Isotype:	IgG
Cross-Reactivity:	Human, Mouse, Rat
Purification:	Purified by Protein A.

Target Details

Target:	CENPA
Alternative Name:	CENPA (CENPA Products)
Background:	Synonyms: CenH3, CENP-A, Histone H3-like centromeric protein A, Centromere autoantigen A, Centromere protein A, CENPA

Target Details

Background: Histone H3-like variant which exclusively replaces conventional H3 in the nucleosome core of centromeric chromatin at the inner plate of the kinetochore. Required for recruitment and assembly of kinetochore proteins, mitotic progression and chromosome segregation. May serve as an epigenetic mark that propagates centromere identity through replication and cell division. The CENPA-H4 heterotetramer can bind DNA by itself (in vitro).

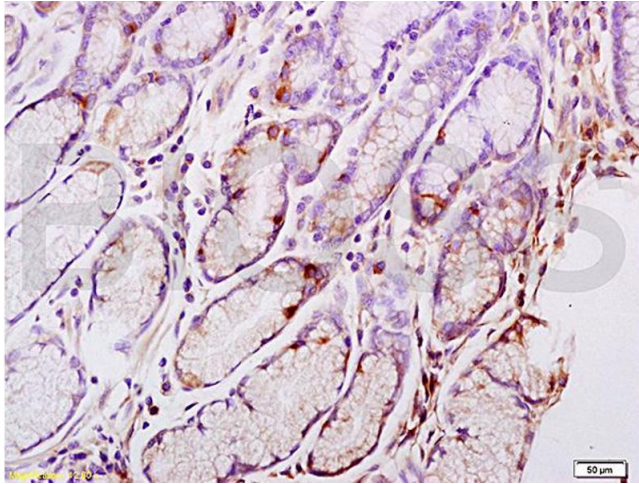
Gene ID:	1058
UniProt:	P49450
Pathways:	Chromatin Binding , Maintenance of Protein Location

Application Details

Application Notes:	WB 1:300-5000 ELISA 1:500-1000
Restrictions:	For Research Use only

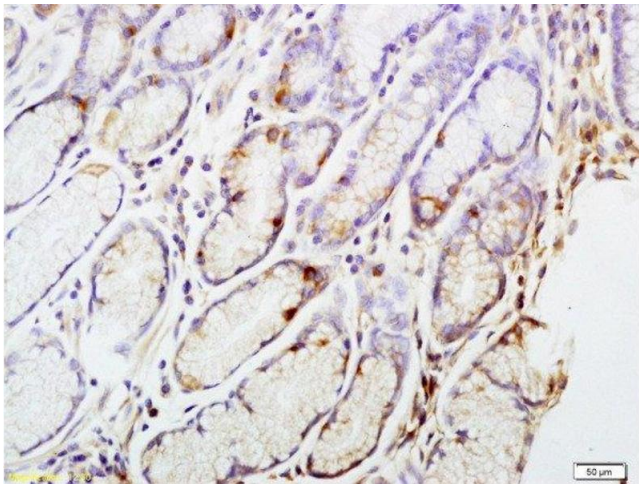
Handling

Format:	Liquid
Concentration:	1 µg/µL
Buffer:	0.01M TBS(pH 7.4) with 1 % BSA, 0.02 % Proclin300 and 50 % Glycerol.
Preservative:	ProClin
Precaution of Use:	This product contains ProClin: a POISONOUS AND HAZARDOUS SUBSTANCE, which should be handled by trained staff only.
Storage:	4 °C,-20 °C
Storage Comment:	Shipped at 4°C. Store at -20°C for one year. Avoid repeated freeze/thaw cycles.
Expiry Date:	12 months



Immunohistochemistry

Image 1. Formalin-fixed and paraffin embedded human gastric carcinoma tissue labeled with Anti-CENPA Polyclonal Antibody, Unconjugated (ABIN750113) at 1:200 followed by conjugation to the secondary antibody and DAB staining



Immunohistochemistry (Paraffin-embedded Sections)

Image 2. Formalin-fixed and paraffin embedded human gastric carcinoma tissue labeled with Anti-CENPA Polyclonal Antibody, Unconjugated at 1:200 followed by conjugation to the secondary antibody and DAB staining