

Datasheet for ABIN7504126

anti-UBE2C antibody**2** Images[Go to Product page](#)

Overview

Quantity:	100 µg
Target:	UBE2C
Reactivity:	Human
Host:	Mouse
Clonality:	Monoclonal
Conjugate:	This UBE2C antibody is un-conjugated
Application:	ELISA, Coating (Coat), Immunohistochemistry (Formalin-fixed Sections) (IHC (f))

Product Details

Immunogen:	Recombinant human full-length UBE2C protein
Isotype:	IgG2b
Specificity:	<p>The ubiquitin (Ub) pathway involves three sequential enzymatic steps that facilitate the conjugation of Ub and Ub-like molecules to specific protein substrates. The first step requires the ATP-dependent activation of the Ub C-terminus and the assembly of multi-Ub chains by the Ub-activating enzyme known as the E1 component. The Ub chain is then conjugated to the Ubconjugating enzyme (E2) to generate an intermediate Ub-E2 complex. The Ub-ligase (E3) then catalyzes the transfer of Ub from E2 to the appropriate protein substrate. UBE2C, also designated UBCH10 in human, is an E2 ubiquitin conjugating enzyme for the anaphase promoting complex (APC), which coordinates mitosis and G1 by sequentially promoting the degradation of key cell-cycle regulators. UBE2C is overexpressed in many different types of cancers and may be a potential therapeutic target.</p>
Cross-Reactivity (Details):	Human

Product Details

Purification: 200ug/ml of Ab purified from Bioreactor Concentrate by Protein A/G.

Target Details

Target: UBE2C

Alternative Name: UBE2C ([UBE2C Products](#))

Background: Cyclin selective ubiquitin carrier protein, mitotic specific ubiquitin conjugating enzyme, UB E2C, UBCH10, Ubiquitin protein ligase C, Ubiquitin-conjugating Enzyme E2C / UBCH10
Cellular localisation: Cytoplasm.

Molecular Weight: 20kDa

Gene ID: 11065, 93002

UniProt: [O00762](#)

Pathways: [Ubiquitin Proteasome Pathway](#)

Application Details

Application Notes: Positive Control: HeLa, Jurkat or A431 cells. Human tonsil or placenta tissue.
Known Application: ELISA (For coating, order antibody without BSA), Immunohistochemistry (Formalin-fixed) (1-2 µg/mL for 30 minutes at RT), (Staining of formalin-fixed tissues requires heating tissue sections in 10 mM Tris with 1 mM EDTA, pH 9.0, for 45 min at 95°C followed by cooling at RT for 20 minutes), Optimal dilution for a specific application should be determined.

Restrictions: For Research Use only

Handling

Concentration: 200 µg/mL

Buffer: Prepared in 10 mM PBS with 0.05 % BSA and 0.05 % azide.

Preservative: Sodium azide

Precaution of Use: This product contains Sodium azide: a POISONOUS AND HAZARDOUS SUBSTANCE which should be handled by trained staff only.

Storage: 4 °C, -80 °C

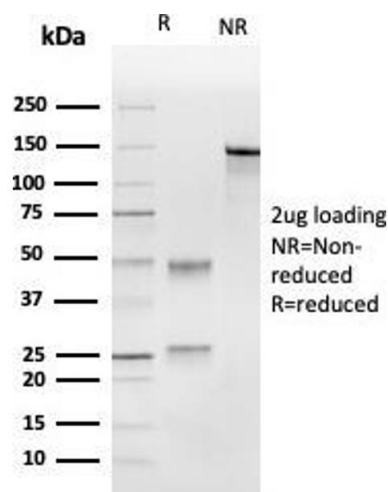
Storage Comment: Antibody with azide - store at 2 to 8 °C. Antibody is stable for 24 months. Non-hazardous. Also

Handling

available WITHOUT BSA & azide at 1.0mg/ml.

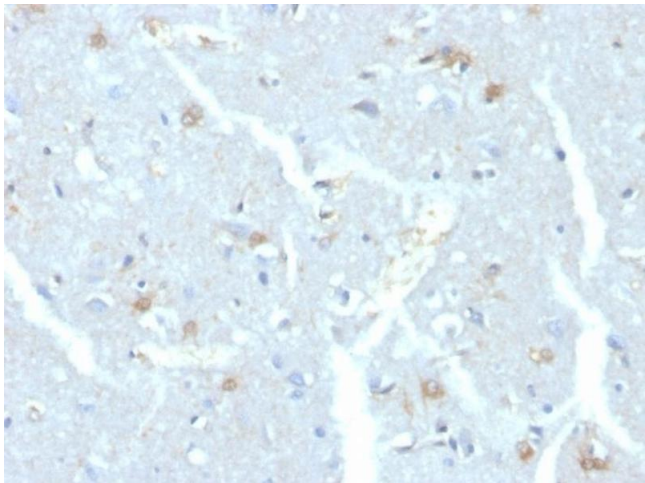
Expiry Date: 24 months

Images



Western Blotting

Image 1. SDS-PAGE Analysis Purified UBE2C Mouse Monoclonal Antibody (CPTC-UBE2C-1). Confirmation of Integrity and Purity of Antibody.



Immunohistochemistry

Image 2. Formalin-fixed, paraffin-embedded human brain stained with UBE2C Mouse Monoclonal Antibody (CPTC-UBE2C-1)