

Datasheet for ABIN7504137

Recombinant anti-p21 antibody (AA 1-100)**5** Images[Go to Product page](#)

Overview

Quantity:	100 µg
Target:	p21 (CDKN1A)
Binding Specificity:	AA 1-100
Reactivity:	Synthetic
Host:	Rabbit
Antibody Type:	Recombinant Antibody
Clonality:	Monoclonal
Conjugate:	This p21 antibody is un-conjugated
Application:	Western Blotting (WB), Immunohistochemistry (Formalin-fixed Sections) (IHC (f))

Product Details

Immunogen:	Synthetic peptide corresponding to p21 residues within aa1-100 of p21 was used as an immunogen.
Isotype:	IgG
Specificity:	<p>This MAb recognizes a 21 kDa protein, identified as the p21WAF1 tumor suppressor protein. This MAb is highly specific to p21 and shows no cross-reaction with other closely related mitotic inhibitors. p21WAF1 is a specific inhibitor of cdk s and a tumor suppressor involved in the pathogenesis of a variety of malignancies. The expression of this gene acts as an inhibitor of the cell cycle during G1 phase and is tightly controlled by the tumor suppressor protein p53. Its expression is induced by the wild type, but not mutant, p53 suppressor protein. Normal cells generally display a rather intense nuclear p21 expression. Loss of p21 expression has been</p>

Product Details

	reported in many carcinomas (gastric carcinoma, non-small cell lung carcinoma, thyroid carcinoma).
Cross-Reactivity (Details):	Human.
Purification:	200ug/ml of Ab purified from Bioreactor Concentrate by Protein A/G.

Target Details

Target:	p21 (CDKN1A)
Alternative Name:	CDKN1A (CDKN1A Products)
Background:	Activating Fragment 1, CAP20, CDK-interacting protein 1, CDKI, CDKN1, CDKN1A, CIP1, Cyclin-dependent kinase inhibitor 1A (p21, Cip1), DNA Synthesis Inhibitor, MDA6, Melanoma Differentiation Associated Protein 6, PIC1, SDI1, SLC12A9, p21Cip1/Waf1, Wild type p53 activated fragment 1 (WAF1),p21WAF1 (Tumor Suppressor Protein) Cellular localisation: Nuclear
Molecular Weight:	21kDa
Gene ID:	1026, 370771
UniProt:	P38936
Pathways:	p53 Signaling , PI3K-Akt Signaling , Cell Division Cycle , AMPK Signaling , Fc-epsilon Receptor Signaling Pathway , EGFR Signaling Pathway , Neurotrophin Signaling Pathway , Mitotic G1-G1/S Phases , DNA Replication , Hepatitis C , Synthesis of DNA , Autophagy

Application Details

Application Notes:	Positive Control: HeLa cells. Human skin, colon, or breast carcinoma. Known Application: Western Blot (2-4 µg/mL), ,Immunohistochemistry (Formalin-fixed) (1-2 µg/mL for 30 minutes at RT),(Staining of formalin-fixed tissues requires heating tissue sections in 10 mM Tris with 1 mM EDTA, pH 9.0, for 45 min at 95 °C followed by cooling at RT for 20 minutes),Optimal dilution for a specific application should be determined.
Restrictions:	For Research Use only

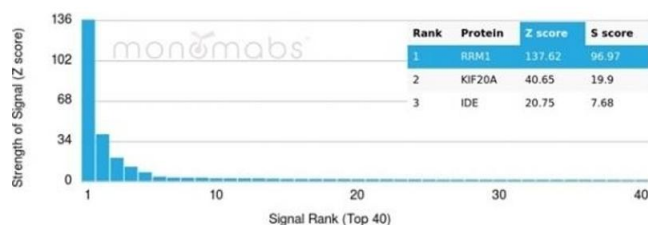
Handling

Concentration:	200 µg/mL
Buffer:	Prepared in 10 mM PBS with 0.05 % BSA and 0.05 % azide.

Handling

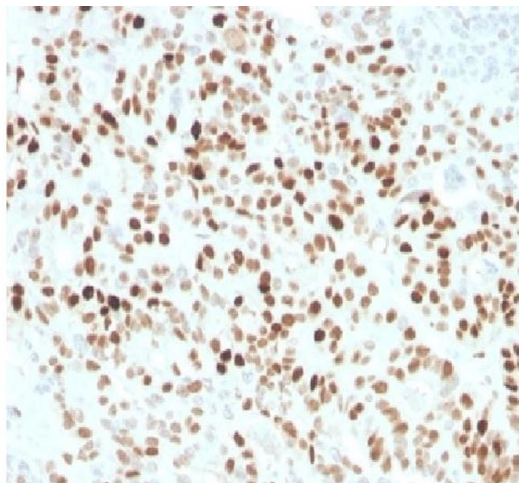
Preservative:	Sodium azide
Precaution of Use:	This product contains Sodium azide: a POISONOUS AND HAZARDOUS SUBSTANCE which should be handled by trained staff only.
Storage:	4 °C,-80 °C
Storage Comment:	Antibody with azide - store at 2 to 8 °C. Antibody is stable for 24 months. Non-hazardous. Also available WITHOUT BSA & azide at 1.0mg/ml.
Expiry Date:	24 months

Images



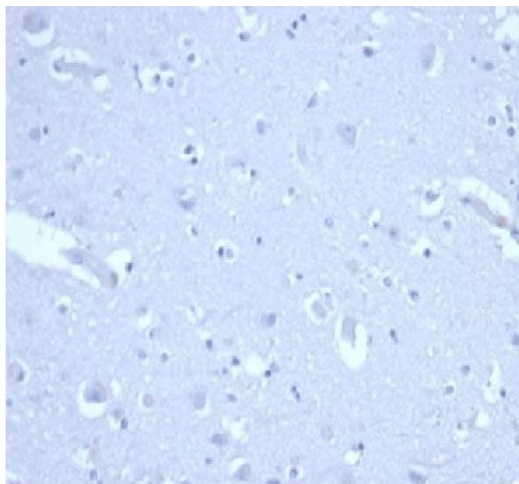
Protein Array

Image 1. Analysis of Protein Array containing more than 19,000 full-length human proteins using p21-Monospecific Rabbit Recombinant Monoclonal Antibody (CIP1/4377R). Z- and S- Score: The Z-score represents the strength of a signal that a monoclonal antibody (MAb) (in combination with a fluorescently-tagged anti-IgG secondary antibody) produces when binding to a particular protein on the HuProt™ array. Z-scores are described in units of standard deviations (SD's) above the mean value of all signals generated on that array. If targets on HuProt™ are arranged in descending order of the Z-score, the S-score is the difference (also in units of SD's) between the Z-score. S-score therefore represents the relative target specificity of a MAb to its intended target. A MAb is considered to specific to its intended target, if the MAb has an S-score of at least 2.5. For example, if a MAb binds to protein X with a Z-score of 43 and to protein Y with a Z-score of 14, then the S-score for the binding of that MAb to protein X is equal to 29.



Immunohistochemistry

Image 2. Formalin fixed paraffin embedded human colon carcinoma stained with p21 Rabbit Recombinant Monoclonal Antibody (CIP1/4377R).



Immunohistochemistry

Image 3. IHC analysis of formalin-fixed, paraffin-embedded human brain. Negative tissue control using CIP1/4377R at 2 µg/mL in PBS for 30 min RT. HIER: Tris/EDTA, pH 9.0, 45 min. 2 °: HRP-polymer, 30 min. DAB, 5 min.

Please check the [product details page](#) for more images. Overall 5 images are available for ABIN7504137.