

Datasheet for ABIN7504169

**Recombinant anti-p21 antibody (AA 1-100)****3** Images[Go to Product page](#)

## Overview

Quantity:	100 µg
Target:	p21 (CDKN1A)
Binding Specificity:	AA 1-100
Reactivity:	Human
Host:	Mouse
Antibody Type:	Recombinant Antibody
Clonality:	Monoclonal
Conjugate:	This p21 antibody is un-conjugated
Application:	Immunohistochemistry (Formalin-fixed Sections) (IHC (f))

## Product Details

Immunogen:	Recombinant fragment (around aa1-100) of human p21 (exact sequence is proprietary)
Isotype:	IgG1
Specificity:	<p>This MAb recognizes a 21 kDa protein, identified as the p21WAF1 tumor suppressor protein. This MAb is highly specific to p21 and shows no cross-reaction with other closely related mitotic inhibitors. p21WAF1 is a specific inhibitor of cdk s and a tumor suppressor involved in the pathogenesis of a variety of malignancies. The expression of this gene acts as an inhibitor of the cell cycle during G1 phase and is tightly controlled by the tumor suppressor protein p53. Its expression is induced by the wild type, but not mutant, p53 suppressor protein. Normal cells generally display a rather intense nuclear p21 expression. Loss of p21 expression has been reported in many carcinomas (gastric carcinoma, non-small cell lung carcinoma, thyroid</p>

## Product Details

---

carcinoma).

Cross-Reactivity (Details): Human.

Purification: 200ug/ml of Ab purified from Bioreactor Concentrate by Protein A/G.

## Target Details

---

Target: p21 (CDKN1A)

Alternative Name: CDKN1A ([CDKN1A Products](#))

Background: Activating Fragment 1, CAP20, CDK-interacting protein 1, CDKI, CDKN1, CDKN1A, CIP1, Cyclin-dependent kinase inhibitor 1A (p21, Cip1), DNA Synthesis Inhibitor, MDA6, Melanoma Differentiation Associated Protein 6, PIC1, SDI1, SLC12A9, p21Cip1/Waf1, Wild type p53 activated fragment 1 (WAF1),p21WAF1 (Tumor Suppressor Protein)  
Cellular localisation: Nuclear

Molecular Weight: 21kDa

Gene ID: 1026, 370771

UniProt: [P38936](#)

Pathways: [p53 Signaling](#), [PI3K-Akt Signaling](#), [Cell Division Cycle](#), [AMPK Signaling](#), [Fc-epsilon Receptor Signaling Pathway](#), [EGFR Signaling Pathway](#), [Neurotrophin Signaling Pathway](#), [Mitotic G1-G1/S Phases](#), [DNA Replication](#), [Hepatitis C](#), [Synthesis of DNA](#), [Autophagy](#)

## Application Details

---

Application Notes: Positive Control: HeLa cells. Human skin, colon, or breast carcinoma.  
Known Application: Immunohistochemistry (Formalin-fixed) (1-2 µg/mL for 30 minutes at RT),(Staining of formalin-fixed tissues requires heating tissue sections in 10 mM Tris with 1 mM EDTA, pH 9.0, for 45 min at 95 &degC followed by cooling at RT for 20 minutes),Optimal dilution for a specific application should be determined.

Restrictions: For Research Use only

## Handling

---

Concentration: 200 µg/mL

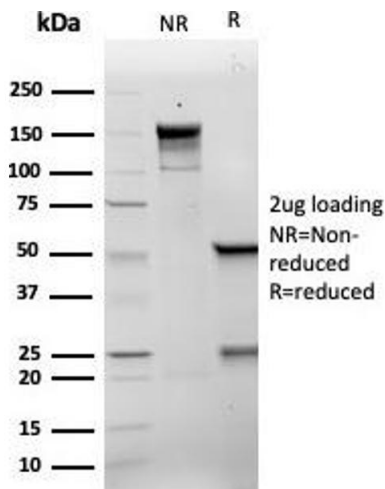
Buffer: Prepared in 10 mM PBS with 0.05 % BSA and 0.05 % azide.

Preservative: Sodium azide

## Handling

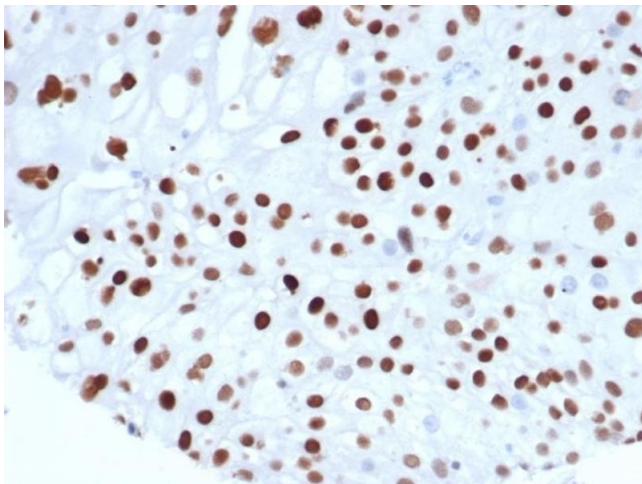
Precaution of Use:	This product contains Sodium azide: a POISONOUS AND HAZARDOUS SUBSTANCE which should be handled by trained staff only.
Storage:	4 °C, -80 °C
Storage Comment:	Antibody with azide - store at 2 to 8 °C. Antibody is stable for 24 months. Non-hazardous. Also available WITHOUT BSA & azide at 1.0mg/ml.
Expiry Date:	24 months

## Images



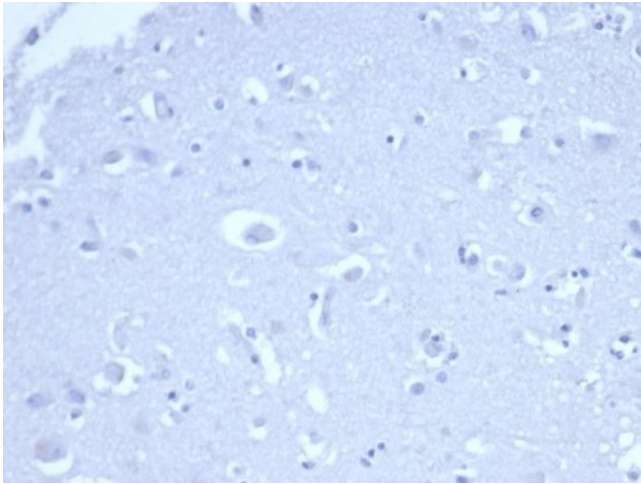
### Western Blotting

**Image 1.** SDS-PAGE Analysis Purified p21 Recombinant Mouse Monoclonal Antibody (rCIP1/6907). Confirmation of Purity and Integrity of Antibody.



### Immunohistochemistry

**Image 2.** Formalin fixed paraffin embedded human colon carcinoma stained with p21 Recombinant Mouse Monoclonal Antibody (rCIP1/6907) at 2 µg/mL. HIER: Tris/EDTA, pH 9.0, 45 min. 2 °: HRP-polymer, 30 min. DAB, 5 min.



### Immunohistochemistry

**Image 3.** IHC analysis of formalin-fixed, paraffin-embedded human brain. Negative tissue control using rCIP1/6907 at 2  $\mu\text{g}/\text{mL}$  in PBS for 30 min RT. HIER: Tris/EDTA, pH 9.0, 45 min. 2 °: HRP-polymer, 30 min. DAB, 5 min.