

Datasheet for ABIN750553
anti-EPHX2 antibody (AA 351-450)[Go to Product page](#)

2 Images

Overview

Quantity:	100 µL
Target:	EPHX2
Binding Specificity:	AA 351-450
Reactivity:	Mouse
Host:	Rabbit
Clonality:	Polyclonal
Conjugate:	This EPHX2 antibody is un-conjugated
Application:	Western Blotting (WB), ELISA, Immunohistochemistry (Paraffin-embedded Sections) (IHC (p)), Immunofluorescence (Cultured Cells) (IF (cc)), Immunofluorescence (Paraffin-embedded Sections) (IF (p)), Immunohistochemistry (Frozen Sections) (IHC (fro))

Product Details

Immunogen:	KLH conjugated synthetic peptide derived from human EPHX2
Isotype:	IgG
Cross-Reactivity:	Mouse
Predicted Reactivity:	Human,Rat,Dog,Cow,Pig,Horse,Rabbit
Purification:	Purified by Protein A.

Target Details

Target:	EPHX2
---------	-------

Target Details

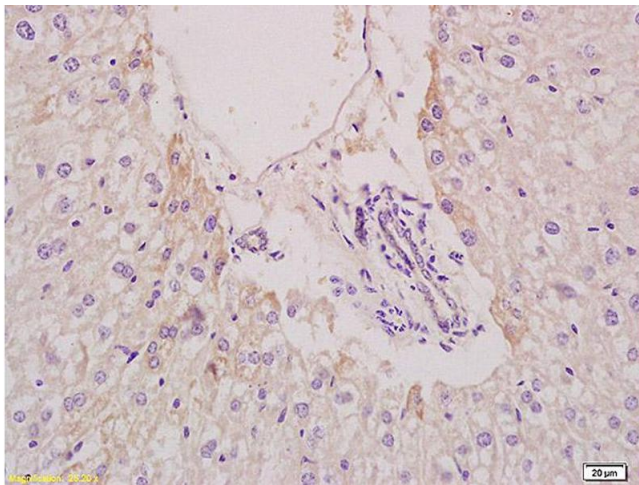
Alternative Name:	EPHX2 (EPHX2 Products)
Background:	<p>Synonyms: CEH, SEH, Bifunctional epoxide hydrolase 2, EPHX2</p> <p>Background: Bifunctional enzyme. The C-terminal domain has epoxide hydrolase activity and acts on epoxides (alkene oxides, oxiranes) and arene oxides. Plays a role in xenobiotic metabolism by degrading potentially toxic epoxides. Also determines steady-state levels of physiological mediators. The N-terminal domain has lipid phosphatase activity, with the highest activity towards threo-9,10-phosphonooxy-hydroxy-octadecanoic acid, followed by erythro-9,10-phosphonooxy-hydroxy-octadecanoic acid, 12-phosphonooxy-octadec-9Z-enoic acid, 12-phosphonooxy-octadec-9E-enoic acid, and p-nitrophenyl phosphate.</p>
Gene ID:	2053
UniProt:	P34913

Application Details

Application Notes:	WB 1:300-5000 ELISA 1:500-1000 IHC-P 1:200-400 IHC-F 1:100-500 IF(IHC-P) 1:50-200 IF(IHC-F) 1:50-200 IF(ICC) 1:50-200
Restrictions:	For Research Use only

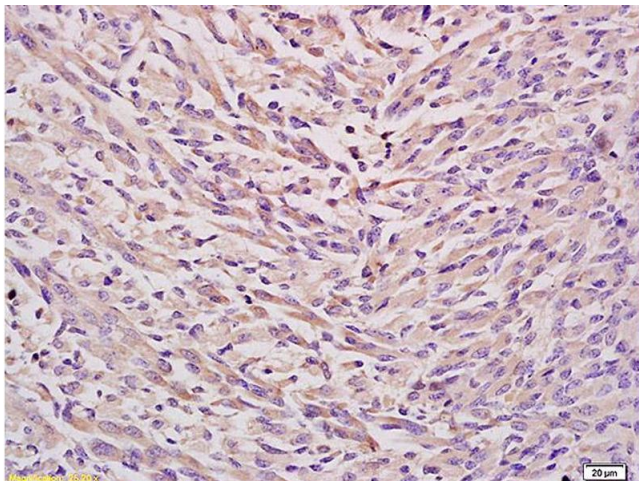
Handling

Format:	Liquid
Concentration:	1 µg/µL
Buffer:	0.01M TBS(pH 7.4) with 1 % BSA, 0.02 % Proclin300 and 50 % Glycerol.
Preservative:	ProClin
Precaution of Use:	This product contains ProClin: a POISONOUS AND HAZARDOUS SUBSTANCE, which should be handled by trained staff only.
Storage:	4 °C,-20 °C
Storage Comment:	Shipped at 4°C. Store at -20°C for one year. Avoid repeated freeze/thaw cycles.



Immunohistochemistry

Image 1. Formalin-fixed and paraffin embedded mouse liver tissue labeled with Anti EPHX2 Polyclonal Antibody, Unconjugated (ABIN750553) at 1:200 followed by conjugation to the secondary antibody and DAB staining.



Immunohistochemistry

Image 2. Formalin-fixed and paraffin embedded mouse embryo tissue labeled with Anti EPHX2 Polyclonal Antibody, Unconjugated (ABIN750553) at 1:200 followed by conjugation to the secondary antibody and DAB staining.