

Datasheet for ABIN7505816
anti-ACE2 antibody (N-Term)

5 Images

[Go to Product page](#)

Overview

| | |
|----------------------|---------------------------------------------------------------------------------|
| Quantity: | 100 µg |
| Target: | ACE2 |
| Binding Specificity: | N-Term |
| Reactivity: | Human |
| Host: | Goat |
| Clonality: | Polyclonal |
| Conjugate: | This ACE2 antibody is un-conjugated |
| Application: | Western Blotting (WB), ELISA, Immunohistochemistry (IHC), Flow Cytometry (FACS) |

Product Details

| | |
|-------------------|---------------------------------------------------------------------------------------------------------------------------------------|
| Purpose: | Goat anti-ACE2 (N Terminal) Antibody |
| Sequence: | PROPRIETAR Y |
| Cross-Reactivity: | Human |
| Purification: | Purified from goat serum by ammonium sulphate precipitation followed by antigen affinity chromatography using the immunizing peptide. |
| Grade: | Verified |

Target Details

| | |
|-------------------|----------------------------------------|
| Target: | ACE2 |
| Alternative Name: | ACE2 (ACE2 Products) |

Target Details

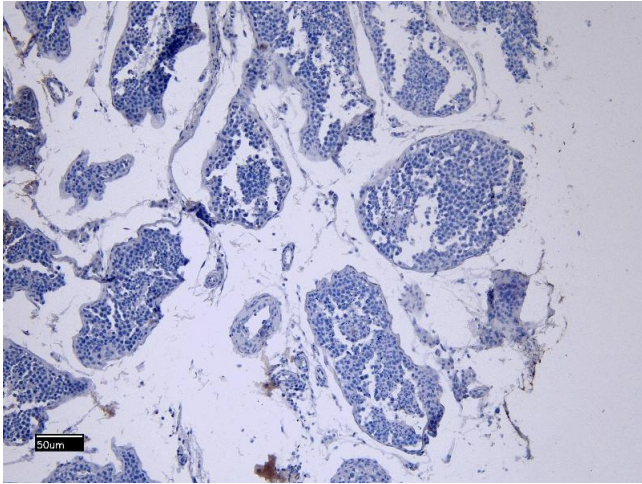
| | |
|-------------|-----------------------------------------------------------------------------------------------------------------------------------------------------------------------------------------------------------------------------------------------------------------|
| Background: | ACE 2 antibody, ACE related carboxypeptidase antibody, ACE-related carboxypeptidase antibody, ACE2 antibody, ACE2_HUMAN antibody, ACEH antibody, Angiotensin converting enzyme 2 antibody, Angiotensin converting enzyme homolog antibody, Angiotensin converti |
| Gene ID: | 59272 |
| Pathways: | ACE Inhibitor Pathway , Peptide Hormone Metabolism , Regulation of Systemic Arterial Blood Pressure by Hormones , Feeding Behaviour |

Application Details

| | |
|--------------------|-------------------------------------------------------------------------------------------------------------------------------------------------------------------------------------------------------------------------------------------------------------------------------------------------------------------------------------------------------------------------------------------------------------------------------------------|
| Application Notes: | Immunohistochemistry: Paraffin embedded Human Testis. Recommended concentration: 8 µg/mL. Western Blot: Approx 90-100 kDa band observed in lysates of cell line HepG2 (calculated MW of 92.4 kDa according to NP_001358344.1). Recommended concentration 0.5-2 µg/mL. Primary incubation 1 hour at room temperature. Approx 100 kDa band was also observe Peptide ELISA: antibody detection limit dilution 1:128000. |
| Comment: | Flow Cytometry: Flow cytometric analysis of HepG2 cells.. Recommended concentration: 10ug/ml. |
| Restrictions: | For Research Use only |

Handling

| | |
|--------------------|------------------------------------------------------------------------------------------------------------------------|
| Buffer: | Supplied at 0.5 mg/mL in Tris saline, 0.02 % sodium azide, pH 7.3 with 0.5 % bovine serum albumin. |
| Preservative: | Sodium azide |
| Precaution of Use: | This product contains Sodium azide: a POISONOUS AND HAZARDOUS SUBSTANCE which should be handled by trained staff only. |
| Storage: | -20 °C |
| Storage Comment: | Aliquot and store at -20°C. Minimize freezing and thawing. |



Immunohistochemistry

Image 1. (ABIN7505816) Negative Control showing staining of paraffin embedded Human Testis, with no primary antibody.



Western Blotting

Image 2. (ABIN7505816) (0.01 µg/mL) staining of recombinant hACE2 (1 µg protein in PBS, pH 7.4). Detected by chemiluminescence.



Western Blotting

Image 3. (ABIN7505816) (1.5 µg/mL) staining of HepG2 cell lysate (35 µg protein in RIPA buffer). Detected by chemiluminescence.

Please check the [product details page](#) for more images. Overall 5 images are available for ABIN7505816.