



Datasheet for ABIN7505817
anti-ACE2 antibody (C-Term)



[Go to Product page](#)

3 Images

Overview

Quantity:	100 µg
Target:	ACE2
Binding Specificity:	C-Term
Reactivity:	Human
Host:	Goat
Clonality:	Polyclonal
Conjugate:	This ACE2 antibody is un-conjugated
Application:	Western Blotting (WB), ELISA, Immunohistochemistry (IHC)

Product Details

Purpose:	Goat anti-ACE2 (C Terminal) Antibody
Sequence:	PROPRIETAR Y
Cross-Reactivity:	Human
Purification:	Purified from goat serum by ammonium sulphate precipitation followed by antigen affinity chromatography using the immunizing peptide.
Grade:	Verified

Target Details

Target:	ACE2
Alternative Name:	ACE2 (ACE2 Products)

Target Details

Background:	ACE 2 antibody, ACE related carboxypeptidase antibody, ACE-related carboxypeptidase antibody, ACE2 antibody, ACE2_HUMAN antibody, ACEH antibody, Angiotensin converting enzyme 2 antibody, Angiotensin converting enzyme homolog antibody, Angiotensin converti
Gene ID:	59272
Pathways:	ACE Inhibitor Pathway , Peptide Hormone Metabolism , Regulation of Systemic Arterial Blood Pressure by Hormones , Feeding Behaviour

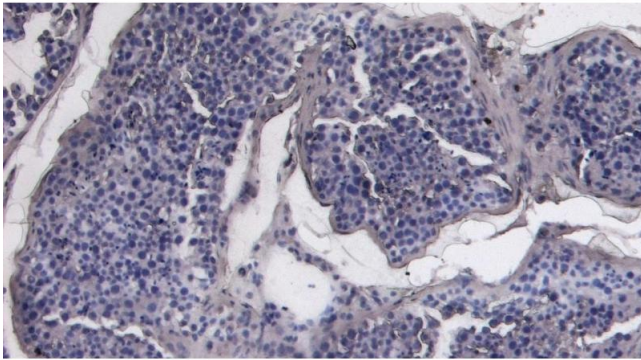
Application Details

Application Notes:	<p>Immunohistochemistry: Paraffin embedded Human Testis. Recommended concentration: 8 µg/mL.</p> <p>A customer reported weak staining on paraffin embedded Human Kidney, concentration 5-6 µg/mL.</p> <p>Western Blot: Approx 140 kDa band observed in Human Kidney lysates (calculated MW of 92.4 kDa according to NP_001358344.1). The observed molecular weight was successfully blocked by incubation with the immunising peptide, and represents glycosylation of AC</p> <p>Peptide ELISA: antibody detection limit dilution 1:8000.</p>
--------------------	---

Restrictions:	For Research Use only
---------------	-----------------------

Handling

Buffer:	Supplied at 0.5 mg/mL in Tris saline, 0.02 % sodium azide, pH 7.3 with 0.5 % bovine serum albumin.
Preservative:	Sodium azide
Precaution of Use:	This product contains Sodium azide: a POISONOUS AND HAZARDOUS SUBSTANCE which should be handled by trained staff only.
Storage:	-20 °C
Storage Comment:	Aliquot and store at -20°C. Minimize freezing and thawing.



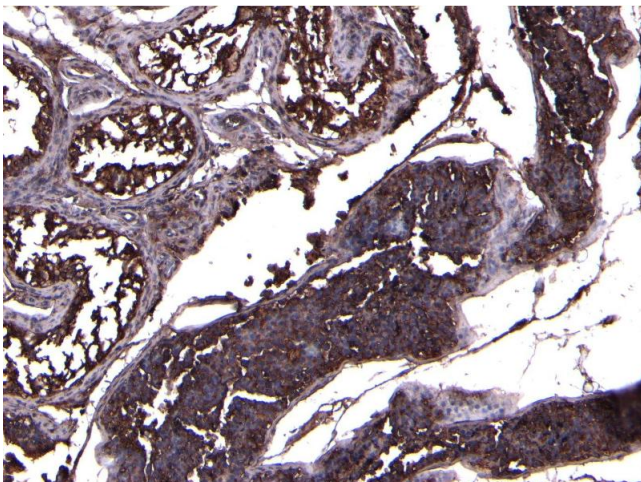
Immunohistochemistry

Image 1. (ABIN7505817) Negative Control showing staining of paraffin embedded Human Testis, with no primary antibody.



Western Blotting

Image 2. (ABIN7505817) (0.5 $\mu\text{g}/\text{mL}$) staining of Human Kidney lysate (A) + Peptide (B) (35 μg protein in RIPA buffer). Detected by chemiluminescence.



Immunohistochemistry

Image 3. (ABIN7505817) (8 $\mu\text{g}/\text{mL}$) staining of paraffin embedded Human Testis. Heat induced antigen retrieval with citrate buffer pH 6, HRP-staining.