

Datasheet for ABIN7505834
Rat IgG2a isotype control (FITC)



[Go to Product page](#)

2 Images

Overview

Quantity:	0.1 mg
Target:	IgG2a
Host:	Rat
Clonality:	Monoclonal
Conjugate:	FITC
Application:	Flow Cytometry (FACS)

Product Details

Purpose:	Rat IgG2a Isotype Control FITC
Clone:	RTG2A1-1
Isotype:	IgG2a
Specificity:	This rat IgG2a kappa monoclonal antibody (clone RTG2A1-1, also known as G2A-1-1 or KLH/G2A-1-1) detects specifically the hemocyanin of keyhole limpet and can be used as a negative control antibody in other species.
Purification:	Purified antibody is conjugated with fluorescein isothiocyanate (FITC) under optimum conditions and unconjugated antibody and free fluorochrome are removed by size-exclusion chromatography.

Target Details

Target:	IgG2a
Abstract:	IgG2a Products

Target Details

Target Type: Antibody

Application Details

Application Notes: Negative control: The reagent is intended as an isotype control to establish the amount of non-specific antibody binding. For your particular experiment, use the same concentration of this control antibody as the recommended working concentration of the antigen-specific antibody. Also, when working with prediluted antibodies, dilute the isotype control to the same concentration as is the concentration of the antigen-specific antibody in the prediluted antibody solution you are using. If under particular experimental conditions the background signal of the isotype control is too high (usually when working concentrations of used antibodies are above 10 µg/mL of incubation mixture), change the conditions of your experiment to reduce the background.

Restrictions: For Research Use only

Handling

Concentration: 1 mg/mL

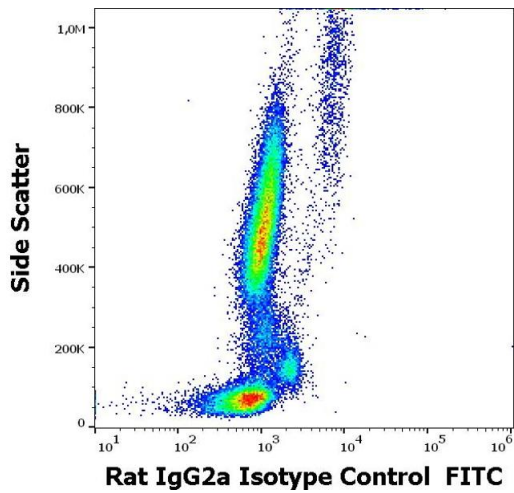
Buffer: Phosphate buffered saline (PBS), pH 7.4, 15 mM sodium azide

Preservative: Sodium azide

Precaution of Use: This product contains Sodium azide: a POISONOUS AND HAZARDOUS SUBSTANCE which should be handled by trained staff only.

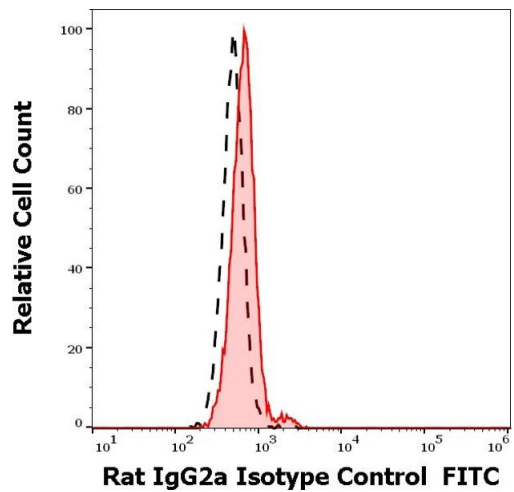
Storage: 4 °C

Storage Comment: Store at 2-8°C. Protect from prolonged exposure to light. Do not freeze.



Flow Cytometry

Image 1. Flow cytometry surface nonspecific staining pattern of human peripheral whole blood stained using Rat IgG2a Isotype control (RTG2A1-1) FITC antibody (concentration in sample 9 µg/mL).



Flow Cytometry

Image 2. Separation of lymphocytes nonspecific stained using Rat IgG2a Isotype control (RTG2A1-1) FITC antibody (concentration in sample 9 µg/mL) from unstained lymphocytes in flow cytometry analysis.