

Datasheet for ABIN7505847  
**anti-C3AR1 antibody (PE)**[Go to Product page](#)

## 2 Images

## Overview

Quantity:	100 tests
Target:	C3AR1
Reactivity:	Human
Host:	Mouse
Clonality:	Monoclonal
Conjugate:	This C3AR1 antibody is conjugated to PE
Application:	Flow Cytometry (FACS)

## Product Details

Purpose:	Anti-Hu C3aR PE
Immunogen:	Human C3aR transfectants
Clone:	HC3aRZ8
Isotype:	IgG2b
Specificity:	The mouse monoclonal antibody HC3aRZ8 recognizes an extracellular epitope of C3aR, a transmembrane chemotactic receptor for C3a anaphylatoxin.
Purification:	Purified antibody is conjugated with R-phycoerythrin (PE) under optimum conditions. Unconjugated antibody and free fluorochrome are removed by size-exclusion chromatography.

## Target Details

Target:	C3AR1
---------	-------

## Target Details

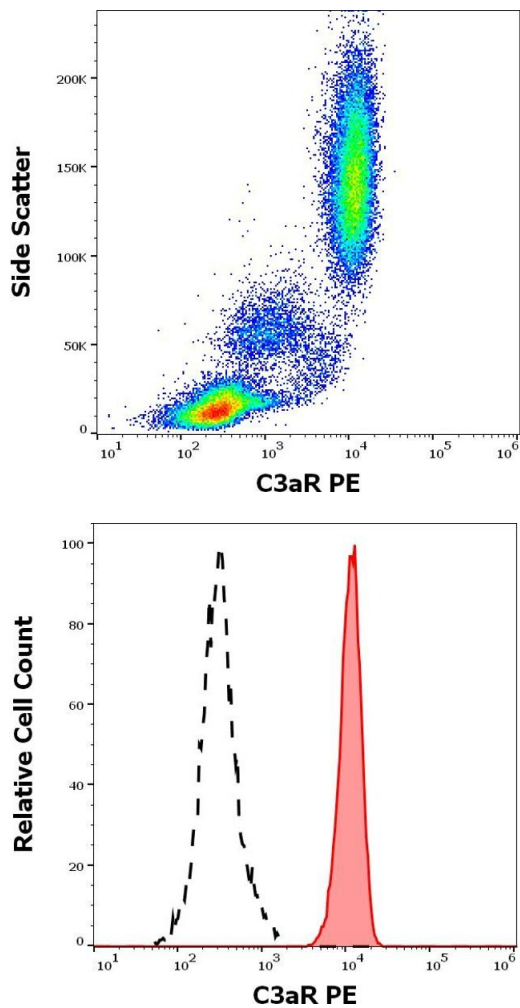
Alternative Name:	C3aR ( <a href="#">C3AR1 Products</a> )
Background:	Complement C3a receptor 1,C3aR is a 7TM transmembrane protein associated with G proteins, and serves as a receptor for C3a complement fragment. It is expressed mainly on neutrophils, mast cells, basophils, eosinophils, dendritic cells, monocytes, and macrophages. Upon detection of its ligand, the activated C3aR signaling cascade results in degranulation, superoxide production, and chemotaxis.,AZ3B, HNFAG09
Gene ID:	719
UniProt:	<a href="#">Q16581</a>
Pathways:	<a href="#">Complement System</a>

## Application Details

Application Notes:	Flow cytometry: The reagent is designed for analysis of human blood cells using 10 µL reagent / 100 µL of whole blood or 10 <sup>6</sup> cells in a suspension. The content of a vial (1 ml) is sufficient for 100 tests.
Restrictions:	For Research Use only

## Handling

Buffer:	Stabilizing phosphate buffered saline (PBS), pH 7.4, 15 mM sodium azide
Preservative:	Sodium azide
Precaution of Use:	This product contains Sodium azide: a POISONOUS AND HAZARDOUS SUBSTANCE which should be handled by trained staff only.
Storage:	4 °C
Storage Comment:	Store at 2-8°C. Protect from prolonged exposure to light. Do not freeze.



Flow Cytometry

**Image 1.** Flow cytometry surface staining pattern of human peripheral whole blood stained using anti-human C3aR (HC3aRZ8) PE antibody (10  $\mu$ L reagent / 100  $\mu$ L of peripheral whole blood).

Flow Cytometry

**Image 2.** Separation of human neutrophil granulocytes (red-filled) from lymphocytes (black-dashed) in flow cytometry analysis (surface staining) of human peripheral whole blood stained using anti-human C3aR (HC3aRZ8) PE antibody (10  $\mu$ L reagent / 100  $\mu$ L of peripheral whole blood).