

Datasheet for ABIN7505848
anti-GPR77 antibody (PE)[Go to Product page](#)

2 Images

Overview

Quantity:	100 tests
Target:	GPR77
Reactivity:	Human, Non-Human Primate
Host:	Mouse
Clonality:	Monoclonal
Conjugate:	This GPR77 antibody is conjugated to PE
Application:	Flow Cytometry (FACS)

Product Details

Purpose:	Anti-Hu C5aR2 PE
Immunogen:	L1.2 cells transfected with human C5aR2
Clone:	1D9-M12
Isotype:	IgG2a kappa
Specificity:	The mouse monoclonal antibody 1D9-M12 recognizes an extracellular epitope on C5aR2 (C5L2), a C5a complement receptor, which is coexpressed with C5aR1 (CD88) in neutrophils, as well as e.g. in mast cells, astrocytes, or macrophages.
Purification:	Purified antibody is conjugated with R-phycoerythrin (PE) under optimum conditions. Unconjugated antibody and free fluorochrome are removed by size-exclusion chromatography.

Target Details

Target:	GPR77
---------	-------

Target Details

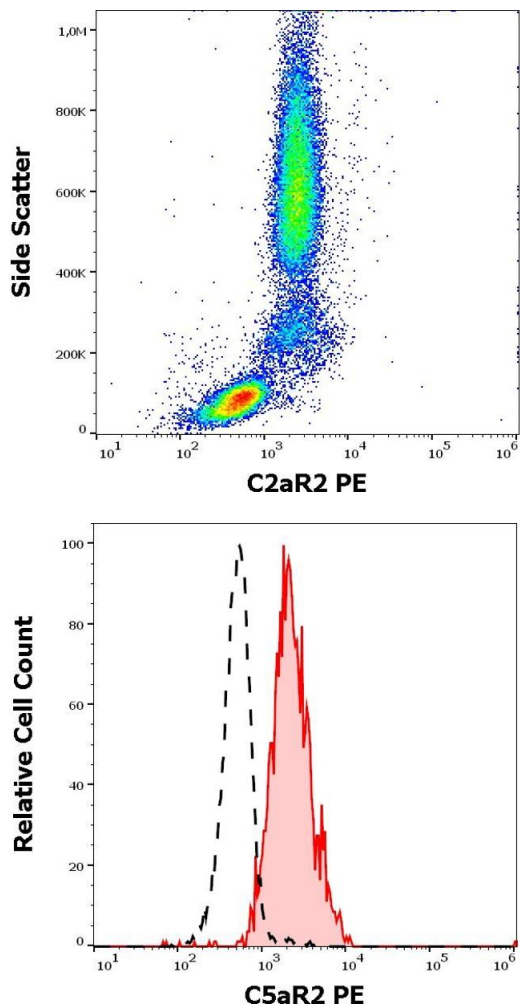
Alternative Name:	C5aR2 (GPR77 Products)
Background:	Complement component 5a receptor 2,C5aR2, also known as C5L2, is one of two receptors for C5a (anaphylatoxin). It is coexpressed with C5aR1 (CD88) in neutrophils, as well as e.g. in mast cells, astrocytes, or macrophages, and seems to have both pro-inflammatory and anti-inflammatory roles, depending on circumstances. Unlike CD88, C5aR2 is not coupled to G-protein, thus the modulatory role is more likely.,C5L2, GPR77, GPF77
Gene ID:	27202
UniProt:	Q9P296

Application Details

Application Notes:	Flow cytometry: The reagent is designed for analysis of human blood cells using 10 µL reagent / 100 µL of whole blood or 10 ⁶ cells in a suspension. The content of a vial (1 ml) is sufficient for 100 tests.
Restrictions:	For Research Use only

Handling

Buffer:	Stabilizing phosphate buffered saline (PBS), pH 7.4, 15 mM sodium azide
Preservative:	Sodium azide
Precaution of Use:	This product contains Sodium azide: a POISONOUS AND HAZARDOUS SUBSTANCE which should be handled by trained staff only.
Storage:	4 °C
Storage Comment:	Store at 2-8°C. Protect from prolonged exposure to light. Do not freeze.



Flow Cytometry

Image 1. Flow cytometry surface staining pattern of human peripheral whole blood stained using anti-human C5aR2 (1D9-M12) PE antibody (10 μ L reagent / 100 μ L of peripheral whole blood).

Flow Cytometry

Image 2. Separation of human neutrophil granulocytes (red-filled) from C5aR2 negative lymphocytes (black-dashed) in flow cytometry analysis (surface staining) of human peripheral whole blood stained using anti-human C5aR2 (1D9-M12) PE antibody (10 μ L reagent / 100 μ L of peripheral whole blood).