

Datasheet for ABIN7505851

**anti-LIFR antibody (PE)**[Go to Product page](#)**1** Image

## Overview

Quantity:	0.1 mg
Target:	LIFR
Reactivity:	Human
Host:	Mouse
Clonality:	Monoclonal
Conjugate:	This LIFR antibody is conjugated to PE
Application:	Flow Cytometry (FACS)

## Product Details

Purpose:	Anti-Hu CD118 PE
Immunogen:	human recombinant soluble CD118-Fc
Clone:	12D3
Isotype:	IgG1 kappa
Specificity:	The mouse monoclonal antibody 12D3 recognizes an extracellular epitope of CD118, a transmembrane glycoprotein, which associates with CD130 to form the functional high affinity LIF receptor.
Purification:	Purified antibody is conjugated with R-phycoerythrin (PE) under optimum conditions. Unconjugated antibody and free fluorochrome are removed by size-exclusion chromatography.

## Target Details

Target:	LIFR
---------	------

## Target Details

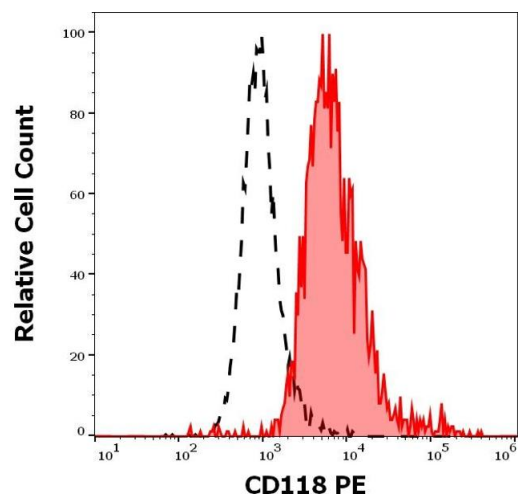
Alternative Name:	CD118 ( <a href="#">LIFR Products</a> )
Background:	LIF receptor subunit alpha,CD118 (LIFR alpha) is a type I transmembrane glycoprotein of the cytokine receptor family, which associates noncovalently with CD130 to form the functional high affinity LIF receptor, which also acts as an oncostatin M receptor. CD118 alone binds LIF with low affinity. A secreted form of CD118 results from alternative splicing, and may have inhibitory effect, as it also binds LIF, although with low affinity. CD118 is not expressed on lymphocytes, but it is widely expressed outside the immune system. Soluble CD118 level rises during pregnancy, in parallel with a drop in circulating LIF levels.,LIFR alpha, SWS, SJS2, STWSm, gp190
Gene ID:	3977
UniProt:	<a href="#">P42702</a>
Pathways:	<a href="#">JAK-STAT Signaling</a> , <a href="#">Growth Factor Binding</a>

## Application Details

Application Notes:	Flow cytometry: Recommended dilution: 4-10 µg/mL.
Restrictions:	For Research Use only

## Handling

Concentration:	0.1 mg/mL
Buffer:	Stabilizing phosphate buffered saline (PBS), pH 7.4, 15 mM sodium azide
Preservative:	Sodium azide
Precaution of Use:	This product contains Sodium azide: a POISONOUS AND HAZARDOUS SUBSTANCE which should be handled by trained staff only.
Storage:	4 °C
Storage Comment:	Store at 2-8°C. Protect from prolonged exposure to light. Do not freeze.



### Flow Cytometry

**Image 1.** Separation of JAR cells stained using anti-human CD118 (12D3) PE antibody (concentration in sample 15  $\mu$ g/mL, red-filled) from JAR cells stained using mouse IgG1 isotype control (MOPC-21) PE antibody (concentration in sample 15  $\mu$ g/mL, same as CD118 PE concentration, black-dashed) in flow cytometry analysis (surface staining) of JAR cell suspension.