

Datasheet for ABIN7505862
anti-ADAM10 antibody (PE)[Go to Product page](#)

2 Images

Overview

Quantity:	100 tests
Target:	ADAM10
Reactivity:	Human
Host:	Mouse
Clonality:	Monoclonal
Conjugate:	This ADAM10 antibody is conjugated to PE
Application:	Flow Cytometry (FACS)

Product Details

Purpose:	Anti-Hu CD156c PE
Immunogen:	Jurkat cells
Clone:	11G2
Isotype:	IgG1 kappa
Specificity:	The mouse monoclonal antibody 11G2 recognizes an extracellular/luminal epitope of CD156c, a type I transmembrane glycoprotein, serving as a zinc-dependent metalloprotease.
No Cross-Reactivity:	Mouse
Purification:	Purified antibody is conjugated with R-phycoerythrin (PE) under optimum conditions. Unconjugated antibody and free fluorochrome are removed by size-exclusion chromatography.

Target Details

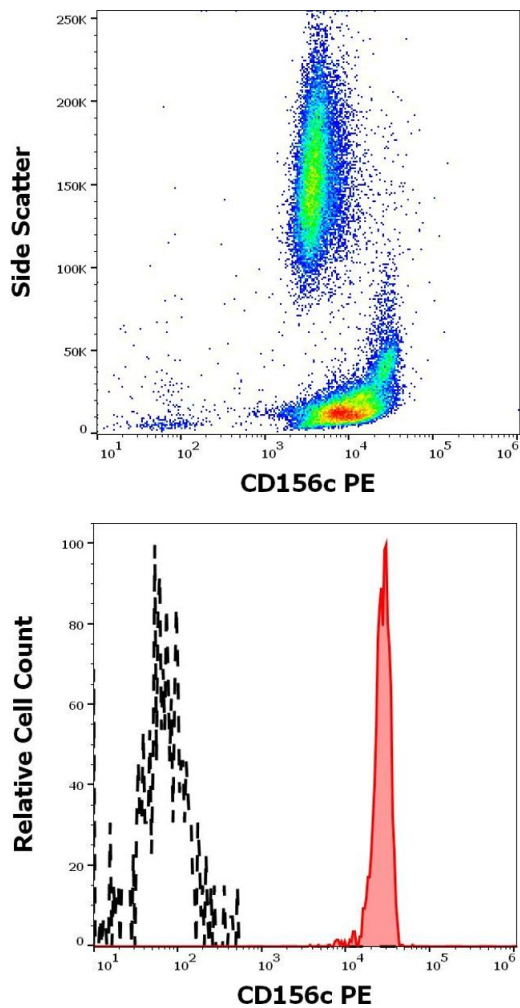
Target:	ADAM10
Alternative Name:	CD156c (ADAM10 Products)
Background:	ADAM metallopeptidase domain 10,CD156c is a type I transmembrane glycoprotein with a zinc-dependent metalloprotease activity. It serves as an endopeptidase of broad specificity, which is expressed mainly in thymus, liver, and muscles. Its expression can be induced in inflamed central nervous system, and in arthritic tissues. CD156c is involved in multiple sclerosis-associated myelin degradation. It also solubilizes various membrane proteins, including CD23, CD44, CD126, CD171, ephrin-A2, and other.,ADAM10, AD10, RAK, MADM, HsT18717
Gene ID:	102
UniProt:	O14672
Pathways:	Notch Signaling , EGFR Signaling Pathway

Application Details

Application Notes:	Flow cytometry: The reagent is designed for analysis of human blood cells using 10 µL reagent / 100 µL of whole blood or 10 ⁶ cells in a suspension. The content of a vial (1 ml) is sufficient for 100 tests. Extracellular and intracellular staining.
Restrictions:	For Research Use only

Handling

Buffer:	Stabilizing phosphate buffered saline (PBS), pH 7.4, 15 mM sodium azide
Preservative:	Sodium azide
Precaution of Use:	This product contains Sodium azide: a POISONOUS AND HAZARDOUS SUBSTANCE which should be handled by trained staff only.
Storage:	4 °C
Storage Comment:	Store at 2-8°C. Protect from prolonged exposure to light. Do not freeze.



Flow Cytometry

Image 1. Flow cytometry surface staining pattern of human peripheral whole blood stained using anti-human CD156c (11G2) PE antibody (10 μ L reagent / 100 μ L of peripheral whole blood).

Flow Cytometry

Image 2. Separation of human monocytes (red-filled) from CD156c negative blood debris (black-dashed) in flow cytometry analysis (surface staining) of human peripheral whole blood stained using anti-human CD156c (11G2) PE antibody (10 μ L reagent / 100 μ L of peripheral whole blood).