

Datasheet for ABIN7505864  
**anti-KIR3DL3 antibody (APC)**

## 2 Images

[Go to Product page](#)

## Overview

Quantity:	0.1 mg
Target:	KIR3DL3
Reactivity:	Human
Host:	Mouse
Clonality:	Monoclonal
Conjugate:	This KIR3DL3 antibody is conjugated to APC
Application:	Flow Cytometry (FACS)

## Product Details

Purpose:	Anti-Hu CD158z APC
Immunogen:	human CD158z transfectants
Clone:	CH21
Isotype:	IgG2a
Specificity:	The mouse monoclonal antibody CH21 recognizes an extracellular epitope of human CD158z (KIR3DL3), a transmembrane glycoprotein of killer cell inhibitory receptor family.
Purification:	Purified antibody is conjugated with activated allophycocyanin (APC) under optimum conditions and unconjugated antibody and free fluorochrome are removed by size-exclusion chromatography.

## Target Details

Target:	KIR3DL3
---------	---------

## Target Details

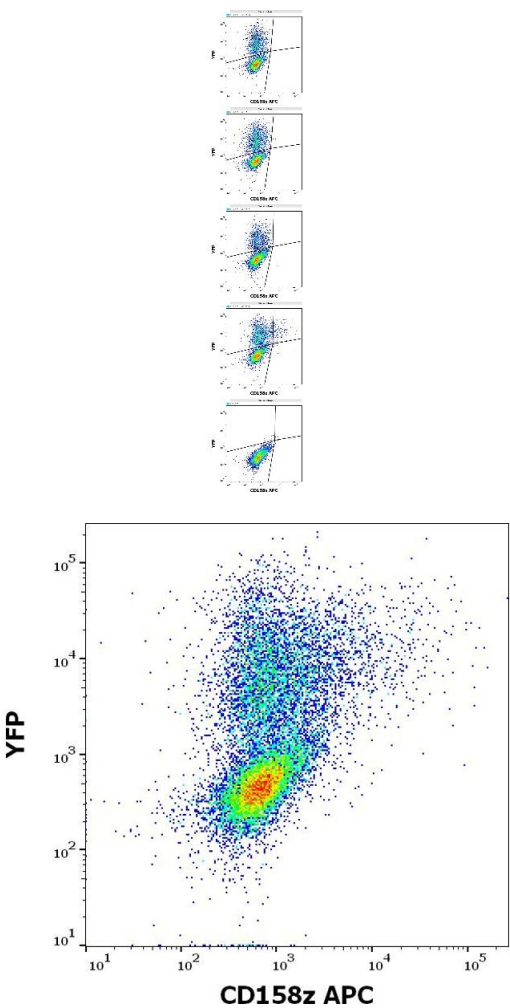
Alternative Name:	CD158z ( <a href="#">KIR3DL3 Products</a> )
Background:	Killer cell immunoglobulin like receptor, three Ig,CD158z (KIR3DL3)is one of killer cell inhibitory receptors. It has three extracellular immunoglobulin-like domains and a long cytoplasmic tail, which, however, contains only one ITIM. Like other KIRs, CD158z is highly polymorphic, but it seems that its immunoglobulin-like domains are quite conserved among high primates.,KIR3DL3
Gene ID:	115653
UniProt:	<a href="#">Q8N743</a>

## Application Details

Application Notes:	Flow cytometry: Recommended dilution: 3-12 µg/mL
Restrictions:	For Research Use only

## Handling

Concentration:	0.1 mg/mL
Buffer:	Stabilizing phosphate buffered saline (PBS), pH 7.4, 15 mM sodium azide
Preservative:	Sodium azide
Precaution of Use:	This product contains Sodium azide: a POISONOUS AND HAZARDOUS SUBSTANCE which should be handled by trained staff only.
Storage:	4 °C
Storage Comment:	Store at 2-8°C. Protect from prolonged exposure to light. Do not freeze.



Flow Cytometry

**Image 1.** Flow cytometry surface staining patterns of non-transfected HEK-293 cells and HEK-293 cells transfected with KIR-family coding plasmids co-transfected with YFP coding plasmid using anti-human CD158z (CH21) APC antibody (concentration in sample 10  $\mu$ g/mL).

Flow Cytometry

**Image 2.** Flow cytometry surface staining pattern of KIR3DL3 (CD158z) transfected HEK-293 cells co-transfected with YFP coding plasmid using anti-human CD158z (CH21) APC antibody (concentration in sample 10  $\mu$ g/mL).