

Datasheet for ABIN7505875  
**anti-CXCR7 antibody (PE)**



[Go to Product page](#)

1 Image

## Overview

Quantity:	100 tests
Target:	CXCR7
Reactivity:	Human
Host:	Mouse
Clonality:	Monoclonal
Conjugate:	This CXCR7 antibody is conjugated to PE
Application:	Flow Cytometry (FACS)

## Product Details

Purpose:	Anti-Hu CD187 PE
Clone:	10D1-J16
Isotype:	IgG2a kappa
Specificity:	The mouse monoclonal antibody 10D1-J16 recognizes an extracellular epitope on CD187/CXCR7, a transmembrane protein of chemokine receptor family.
Purification:	Purified antibody is conjugated with R-phycoerythrin (PE) under optimum conditions. Unconjugated antibody and free fluorochrome are removed by size-exclusion chromatography.

## Target Details

Target:	CXCR7
Alternative Name:	CD187 ( <a href="#">CXCR7 Products</a> )

## Target Details

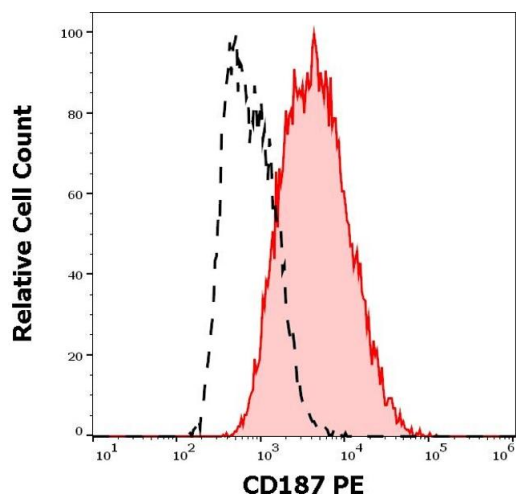
Background:	Atypical chemokine receptor 3,CD187 (CXCR7) is a member of chemokine receptor family, but with discussed specificity. It is expressed in various tissues and cells, such as placenta, urinary bladder, fetal liver cells, tumor cells, activated endothelium, monocytes, lymphocytes, mature dendritic cells, and other.,CXCR7, RDC1, GPR159, ACKR3
Gene ID:	57007
UniProt:	<a href="#">P25106</a>
Pathways:	<a href="#">Myometrial Relaxation and Contraction</a> , <a href="#">Negative Regulation of intrinsic apoptotic Signaling</a>

## Application Details

Application Notes:	Flow cytometry: The reagent is designed for analysis of human blood cells using 10 µL reagent / 100 µL of whole blood or 10 <sup>6</sup> cells in a suspension. The content of a vial (1 ml) is sufficient for 100 tests.
Restrictions:	For Research Use only

## Handling

Buffer:	Stabilizing phosphate buffered saline (PBS), pH 7.4, 15 mM sodium azide
Preservative:	Sodium azide
Precaution of Use:	This product contains Sodium azide: a POISONOUS AND HAZARDOUS SUBSTANCE which should be handled by trained staff only.
Storage:	4 °C
Storage Comment:	Store at 2-8°C. Protect from prolonged exposure to light. Do not freeze.



### Flow Cytometry

**Image 1.** Separation of MCF-7 cells stained using anti-human CD187 (10D1-J16) PE antibody (10  $\mu$ L reagent per million cells in 100  $\mu$ L of cell suspension, red-filled) from MCF-7 cells stained using mouse IgG2a isotype control (MOPC-173) PE antibody (concentration in sample 5  $\mu$ g/mL, same as CD187 PE concentration, black-dashed) in flow cytometry analysis (surface staining) of MCF-7 cell suspension.