

Datasheet for ABIN7505877
anti-CD1b antibody (APC)

3 Images

[Go to Product page](#)

Overview

Quantity:	100 tests
Target:	CD1b (CD1B)
Reactivity:	Human
Host:	Mouse
Clonality:	Monoclonal
Conjugate:	This CD1b antibody is conjugated to APC
Application:	Flow Cytometry (FACS)

Product Details

Purpose:	Anti-Hu CD1b APC
Immunogen:	A cell membrane antigen preparation that was isolated from normal human thymocytes
Clone:	SN13
Isotype:	IgG1 kappa
Specificity:	The mouse monoclonal antibody SN13 (also known as K5-1B8) recognizes an extracellular epitope of CD1b, a 44 kDa type I glycoprotein associated with beta2-microglobulin. It is expressed on dendritic cells, Langerhans cells, thymocytes, and T acute lymphoblastic leukemia cells.
Purification:	Purified antibody is conjugated with activated allophycocyanin (APC) under optimum conditions and unconjugated antibody and free fluorochrome are removed by size-exclusion chromatography.

Target Details

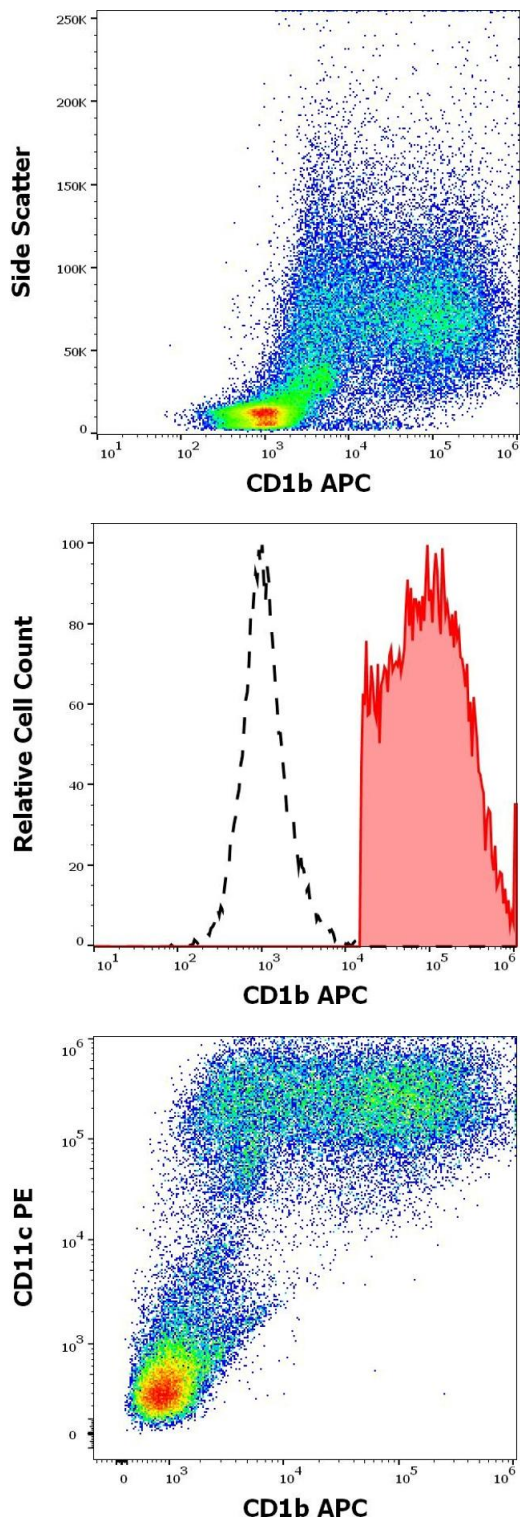
Target:	CD1b (CD1B)
Alternative Name:	CD1b (CD1B Products)
Background:	CD1b molecule,CD1b (also known as R1) together with CD1a and c, belongs to group 1 of CD1 antigens. These non-classical MHC-like glycoproteins serve as antigen-presenting molecules for a subset of T cells that responds to specific lipids and glycolipids found in the cell walls of bacterial pathogens or self-glycolipid antigens such as gangliosides, and they have also roles in antiviral immunity. The trafficking routes of the particular CD1 types differ and correspond to their ability to bind and present different groups of antigens. Besides non-peptide glycolipid antigen presentation to CD1-restricted T cells, CD1b has been implicated in thymocyte development.,R1
Gene ID:	910
UniProt:	P29016

Application Details

Application Notes:	Flow cytometry: The reagent is designed for analysis of human blood cells using 10 µL reagent / 100 µL of whole blood or 10 ⁶ cells in a suspension. The content of a vial (1 ml) is sufficient for 100 tests.
Restrictions:	For Research Use only

Handling

Buffer:	Stabilizing phosphate buffered saline (PBS), pH 7.4, 15 mM sodium azide
Preservative:	Sodium azide
Precaution of Use:	This product contains Sodium azide: a POISONOUS AND HAZARDOUS SUBSTANCE which should be handled by trained staff only.
Storage:	4 °C
Storage Comment:	Store at 2-8°C. Protect from prolonged exposure to light. Do not freeze.



Flow Cytometry

Image 1. Flow cytometry surface staining pattern of human stimulated (GM-CSF + IL-4) peripheral blood mononuclear cells stained using anti-human CD1b (SN13) APC antibody (10 μ L reagent per milion cells in 100 μ L of cell suspension).

Flow Cytometry

Image 2. Separation of human CD11c positive CD1b positive cells (red-filled) from CD11c negative CD1b negative cells (black-dashed) in flow cytometry analysis (surface staining) of human stimulated (GM-CSF + IL-4) peripheral blood mononuclear cells stained using anti-human CD1b (SN13) APC antibody (10 μ L reagent per milion cells in 100 μ L of cell suspension).

Flow Cytometry

Image 3. Flow cytometry multicolor surface staining pattern of human stimulated (GM-CSF + IL-4) peripheral blood mononuclear cells using anti-human CD1b (SN13) APC antibody (10 μ L reagent per milion cells in 100 μ L of cell suspension) and anti-human CD11c (BU15) PE antibody (20 μ L reagent per milion cells in 100 μ L of cell suspension).