

Datasheet for ABIN7505878

anti-CD1d antibody**2** Images[Go to Product page](#)

Overview

Quantity:	0.1 mg
Target:	CD1d (CD1D)
Reactivity:	Human, Non-Human Primate
Host:	Mouse
Clonality:	Monoclonal
Conjugate:	This CD1d antibody is un-conjugated
Application:	Flow Cytometry (FACS), Western Blotting (WB), Immunoprecipitation (IP), Immunohistochemistry (Frozen Sections) (IHC (fro))

Product Details

Purpose:	Anti-Hu CD1d Purified
Immunogen:	human CD1d
Clone:	51-1
Isotype:	IgG2b kappa
Specificity:	The mouse monoclonal antibody 51.1 recognizes an extracellular epitope of CD1d, a 38 kDa transmembrane glycoprotein expressed mainly on cortical thymocytes, marginal zone B cells and other antigen presenting cells, but also i.e.g. hepatitis C virus-infected livers.
Purification:	Purified by protein-A affinity chromatography.

Target Details

Target:	CD1d (CD1D)
---------	-------------

Target Details

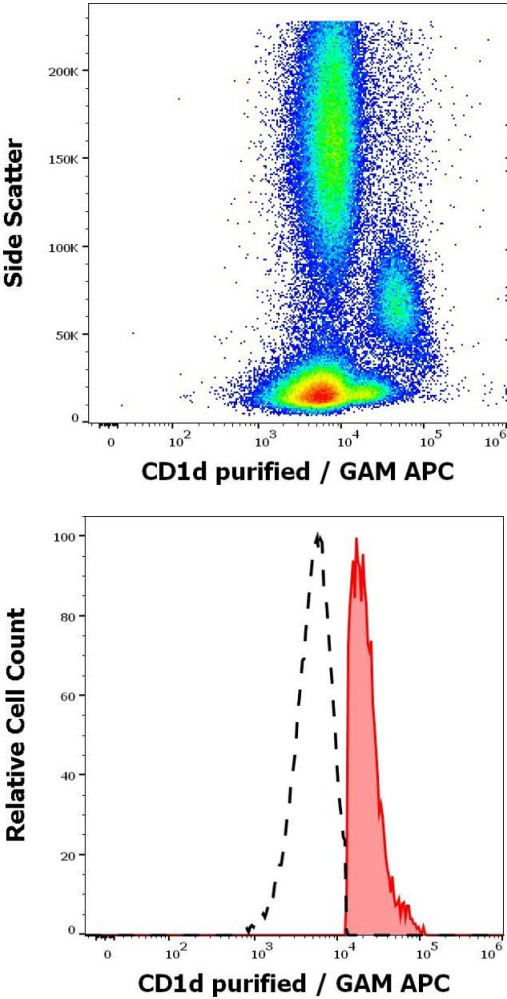
Alternative Name:	CD1d (CD1D Products)
Background:	CD1d molecule,CD1d belongs to CD1 family of transmembrane glycoproteins, associated with beta2 microglobulin, similarly to MHC I molecules. Unlike other CD1 family members, however, CD1d can be also expressed in a non-glycosylated form, which is not associated with beta2 microglobulin. Hence it is not certain how much CD1d plays a role in the presentation of microbial lipid antigens during infection. On the other hand, it is expressed on various antigen presenting cell types. Besides it, CD1d+ thymocytes are involved in the positive selection of sublineage of NKT cells.
Gene ID:	912
UniProt:	P15813
Pathways:	Regulation of Leukocyte Mediated Immunity , Positive Regulation of Immune Effector Process

Application Details

Application Notes:	Flow cytometry: Recommended dilution: 4-8 µg/mL.
Restrictions:	For Research Use only

Handling

Concentration:	1 mg/mL
Buffer:	Phosphate buffered saline (PBS), pH 7.4, 15 mM sodium azide
Preservative:	Sodium azide
Precaution of Use:	This product contains Sodium azide: a POISONOUS AND HAZARDOUS SUBSTANCE which should be handled by trained staff only.
Storage:	4 °C
Storage Comment:	Store at 2-8°C. Do not freeze.



Flow Cytometry

Image 1. Flow cytometry surface staining pattern of human peripheral whole blood stained using anti-human CD1d (51.1) purified antibody (concentration in sample 5 µg/mL, GAM APC).

Flow Cytometry

Image 2. Separation of human CD1d positive lymphocytes (red-filled) from human CD1d negative lymphocytes (black-dashed) in flow cytometry analysis (surface staining) of peripheral whole blood stained using anti-human CD1d (51.1) purified antibody (concentration in sample 5 µg/mL, GAM APC).