

Datasheet for ABIN7505884

anti-CD207 antibody**3** Images[Go to Product page](#)

Overview

Quantity:	0.1 mg
Target:	CD207
Reactivity:	Human, Non-Human Primate
Host:	Mouse
Clonality:	Monoclonal
Conjugate:	This CD207 antibody is un-conjugated
Application:	ELISA, Flow Cytometry (FACS), Immunocytochemistry (ICC), Immunohistochemistry (Frozen Sections) (IHC (fro))

Product Details

Purpose:	Anti-Hu CD207 Purified
Immunogen:	Fusion protein of human CD207 extracellular part and IgG Fc fragment
Clone:	2G3
Isotype:	IgG1 lambda
Specificity:	The mouse monoclonal antibody 2G3 recognizes an extracellular/luminal epitope of CD207, a transmembrane protein selectively expressed by Langerhans cells and by some other dendritic cell subsets. This antibody clone can target vaccine-peptides to dendritic cells.
Purification:	Purified by protein-A affinity chromatography.

Target Details

Target:	CD207
---------	-------

Target Details

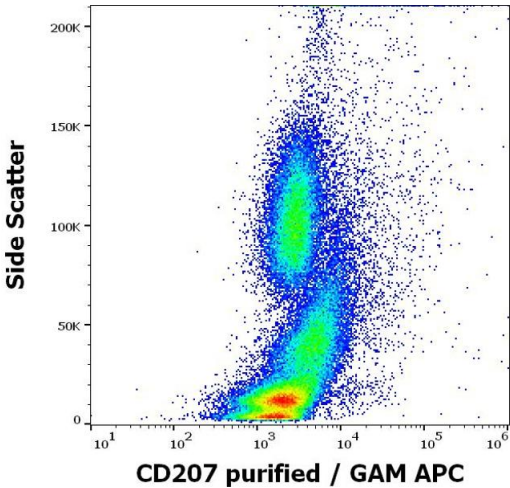
Alternative Name:	CD207 (CD207 Products)
Background:	CD207 Molecule,CD207 is a 40 kDa type II transmembrane glycoprotein of the C-type lectin family. It binds to mannose-bearing glycoproteins and glycolipids of microbial and viral antigens, including HIV gp120. CD207 is expressed only in Langerhans cells, which are immature dendritic cells of the epidermis and mucosa, and its expression decreases during Langerhans cells maturation. Upon antigen binding CD207 localizes to the Birbeck granules, organelles present in the cytoplasm of Langerhans cells and consisting of superimposed membranes, which leads to a nonclassical antigen-processing pathway.,CLEC4K, langerin
Gene ID:	50489
UniProt:	Q9UJ71

Application Details

Application Notes:	Flow cytometry: Recommended dilution: 0.5-4 µg/mL. Extracellular and intracellular staining.
Restrictions:	For Research Use only

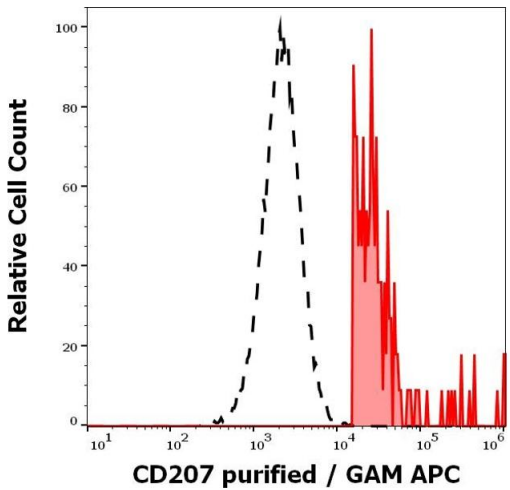
Handling

Concentration:	1 mg/mL
Buffer:	Phosphate buffered saline (PBS), pH 7.4, 15 mM sodium azide
Preservative:	Sodium azide
Precaution of Use:	This product contains Sodium azide: a POISONOUS AND HAZARDOUS SUBSTANCE which should be handled by trained staff only.
Storage:	4 °C
Storage Comment:	Store at 2-8°C. Do not freeze.



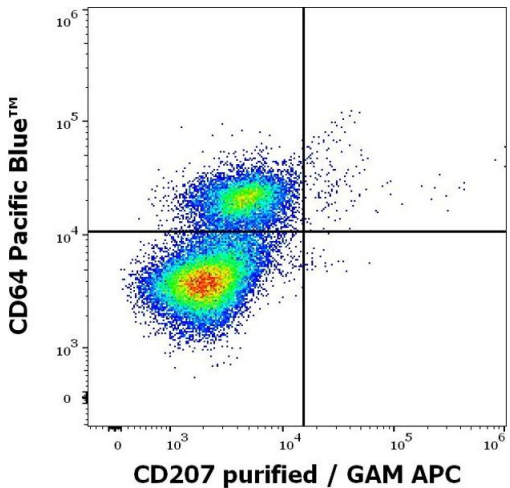
Flow Cytometry

Image 1. Flow cytometry intracellular staining pattern of human stimulated (GM-CSF + IL-4 + TGF-beta) peripheral blood mononuclear cells whole blood stained using anti-human CD207 (2G3) purified antibody (concentration in sample 0.56 µg/mL, GAM APC).



Flow Cytometry

Image 2. Separation of human CD64 positive CD207 positive cells (red-filled) from CD64 negative CD207 negative cells (black-dashed) in flow cytometry analysis (intracellular staining) of human stimulated (GM-CSF + IL-4 + TGF-beta) peripheral blood mononuclear cells stained using anti-human CD207 (2G3) purified antibody (concentration in sample 0.56 µg/mL, GAM APC).



Flow Cytometry

Image 3. Flow cytometry multicolor intracellular staining pattern of human stimulated (GM-CSF + IL-4 + TGF-beta) monocytes using anti-human CD207 (2G3) purified antibody (concentration in sample 0.56 µg/mL, GAM APC) and anti-human CD64 (10.1) Pacific Blue antibody (4 µL reagent per milion cells in 100 µL of cell suspension).