

Datasheet for ABIN7505887
anti-CD235a/GYPA antibody (Biotin)[Go to Product page](#)

2 Images

Overview

Quantity:	0.1 mg
Target:	CD235a/GYPA (GYPA)
Reactivity:	Human, Rat
Host:	Mouse
Clonality:	Monoclonal
Conjugate:	This CD235a/GYPA antibody is conjugated to Biotin
Application:	Flow Cytometry (FACS), Immunohistochemistry (Paraffin-embedded Sections) (IHC (p)), Immunohistochemistry (Frozen Sections) (IHC (fro))

Product Details

Purpose:	Anti-Hu CD235a Biotin
Immunogen:	Membrane preparation from splenic hairy cell leukemia
Clone:	JC159
Isotype:	IgG1
Specificity:	The mouse monoclonal antibody JC159 recognizes an epitope between amino acids 27 and 40 of the extracellular portion of CD235a (glycophorin A), a sialoglycoprotein expressed on early erythroblasts, late erythroblasts, erythroblasts, mature erythrocytes and the cells of erythroid cell lines K562 and HEL. The antibody does not react with glycophorin B.
Purification:	Purified antibody is conjugated with biotin LC-NHS ester under optimum conditions and unconjugated antibody and free biotin are removed by size-exclusion chromatography.

Target Details

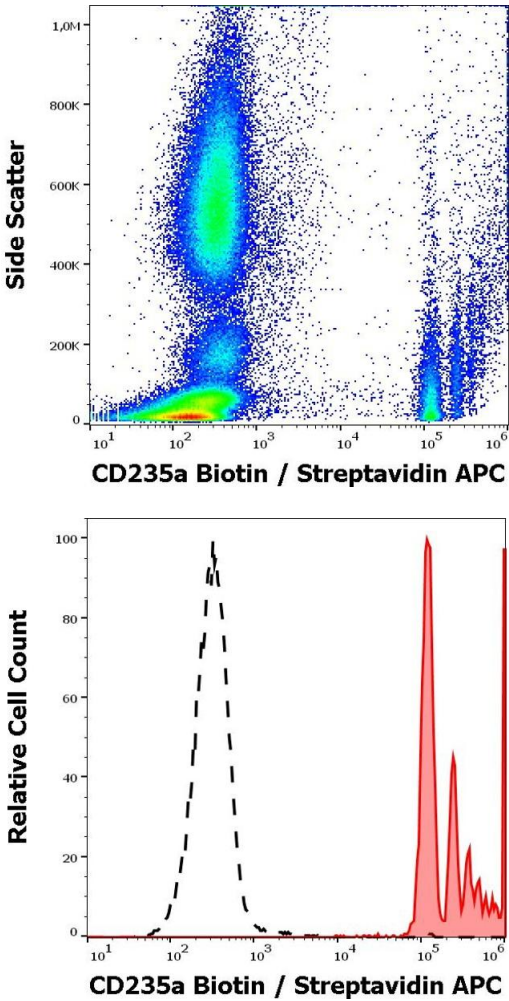
Target:	CD235a/GYPA (GYPA)
Alternative Name:	CD235a (GYPA Products)
Background:	Glycophorin A (MNS blood group),CD235a (glycophorin A, GPA) is a transmembrane sialoglycoprotein expressed on erythrocytes and their precursors. Similarly to CD235b (glycophorin B, GPB), these molecules provide the cells with a large mucin-like surface, which minimalizes aggregation between erythrocytes in the circulation. GPA is the carrier of blood group M and N specificities, while GPB accounts for S, s and U specificities. CD235a is a receptor of Hsa, a Streptococcus adhesin.,Glycophorin A, GYPA, GPA, PAS-2, Sialoglycoprotein alpha, MN sialoglycoprotein, GPSAT, GP _E rik, MSN blood group
Gene ID:	2993
UniProt:	P02724
Pathways:	Maintenance of Protein Location

Application Details

Application Notes:	Flow cytometry: Recommended dilution: 1-4 µg/mL.
Restrictions:	For Research Use only

Handling

Concentration:	1 mg/mL
Buffer:	Phosphate buffered saline (PBS), pH 7.4, 15 mM sodium azide
Preservative:	Sodium azide
Precaution of Use:	This product contains Sodium azide: a POISONOUS AND HAZARDOUS SUBSTANCE which should be handled by trained staff only.
Storage:	4 °C
Storage Comment:	Store at 2-8°C. Do not freeze.



Flow Cytometry

Image 1. Flow cytometry surface staining pattern of human peripheral whole blood stained using anti-human CD235a (JC159) Biotin antibody (concentration in sample 5 µg/mL, Streptavidin APC).

Flow Cytometry

Image 2. Separation of human CD235a positive erythrocytes (red-filled) from leukocytes (black-dashed) in flow cytometry analysis (surface staining) of human peripheral whole blood stained using anti-human CD235a (JC159) Biotin antibody (concentration in sample 5 µg/mL, Streptavidin APC).