

Datasheet for ABIN7505892
anti-BTLA antibody (PE)[Go to Product page](#)

2 Images

Overview

Quantity:	100 tests
Target:	BTLA
Reactivity:	Human, Non-Human Primate
Host:	Mouse
Clonality:	Monoclonal
Conjugate:	This BTLA antibody is conjugated to PE
Application:	Flow Cytometry (FACS)

Product Details

Purpose:	Anti-Hu CD272 PE
Immunogen:	cells transfected with human CD272
Clone:	MIH26
Isotype:	IgG2a kappa
Specificity:	The mouse monoclonal antibody MIH26 recognizes an extracellular epitope of CD272, a transmembrane glycoprotein serving as a negative regulator of the activation in various leukocyte types.
Purification:	Purified antibody is conjugated with R-phycoerythrin (PE) under optimum conditions. Unconjugated antibody and free fluorochrome are removed by size-exclusion chromatography.

Target Details

Target:	BTLA
---------	------

Target Details

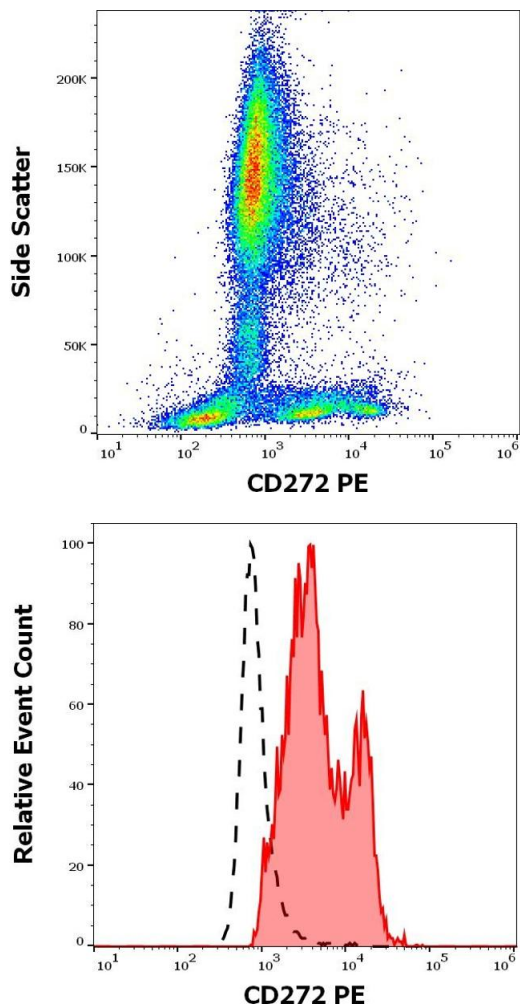
Alternative Name:	CD272 (BTLA Products)
Background:	B and T lymphocyte associated,CD272, a type I transmembrane glycoprotein, contains in its intracellular domain two ITIM sequences, which are upon CD272 triggering phosphorylated and recruit SHP phosphatases to attenuate cell activation. CD272 is expressed on B and T lymphocytes, NK cells, dendritic cells, and macrophages, and its ligand is CD270. Defects in CD272-CD270 inhibitory mechanism lead to autoimmune diseases. Overexpression of CD272 is a marker of tolerant T cells.,BTLA1
Gene ID:	151888
UniProt:	Q7Z6A9
Pathways:	Cancer Immune Checkpoints

Application Details

Application Notes:	Flow cytometry: The reagent is designed for analysis of human blood cells using 10 µL reagent / 100 µL of whole blood or 10 ⁶ cells in a suspension. The content of a vial (1 ml) is sufficient for 100 tests.
Restrictions:	For Research Use only

Handling

Buffer:	Stabilizing phosphate buffered saline (PBS), pH 7.4, 15 mM sodium azide
Preservative:	Sodium azide
Precaution of Use:	This product contains Sodium azide: a POISONOUS AND HAZARDOUS SUBSTANCE which should be handled by trained staff only.
Storage:	4 °C
Storage Comment:	Store at 2-8°C. Protect from prolonged exposure to light. Do not freeze.



Flow Cytometry

Image 1. Flow cytometry surface staining pattern of human peripheral whole blood stained using anti-human CD272 (MIH26) PE antibody (10 μ L reagent / 100 μ L of peripheral whole blood).

Flow Cytometry

Image 2. Separation of human CD272 positive lymphocytes (red-filled) from neutrophil granulocytes (black-dashed) in flow cytometry analysis (surface staining) of human peripheral whole blood stained using anti-human CD272 (MIH26) PE antibody (10 μ L reagent / 100 μ L of peripheral whole blood).