

Datasheet for ABIN7505900

anti-FCRL1 antibody

3 Images

[Go to Product page](#)

Overview

Quantity:	0.1 mg
Target:	FCRL1
Reactivity:	Human
Host:	Mouse
Clonality:	Monoclonal
Conjugate:	This FCRL1 antibody is un-conjugated
Application:	Flow Cytometry (FACS)

Product Details

Purpose:	Anti-Hu CD307a Purified
Immunogen:	DNA-immunization followed by a boost with the CD307a transfected cells
Clone:	E3
Isotype:	IgG1 kappa
Specificity:	The mouse monoclonal antibody E3 recognizes an extracellular epitope of CD307a, a transmembrane glycoprotein expressed predominantly on the surface of mature B cells.
Purification:	Purified by protein-A affinity chromatography.

Target Details

Target:	FCRL1
Alternative Name:	CD307a (FCRL1 Products)

Target Details

Background:	Fc receptor like 1,CD307a is a type I transmembrane glycoprotein of the Fc receptor family. It contains two ITAM motifs in its cytoplasmic domain. CD307a is expressed mainly on the surface of mature B-cells, and is down-regulated in germinal center B-cells. Expression of CD307a is higher in patients with autoimmune diseases, compared with healthy controls.,FcRL1, FcRH1, IRTA5
Gene ID:	115350
UniProt:	Q96LA6

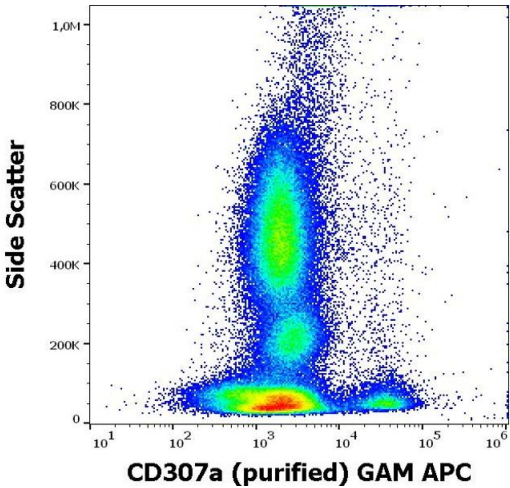
Application Details

Application Notes:	Flow cytometry: Recommended dilution: 1-4 µg/mL.
Restrictions:	For Research Use only

Handling

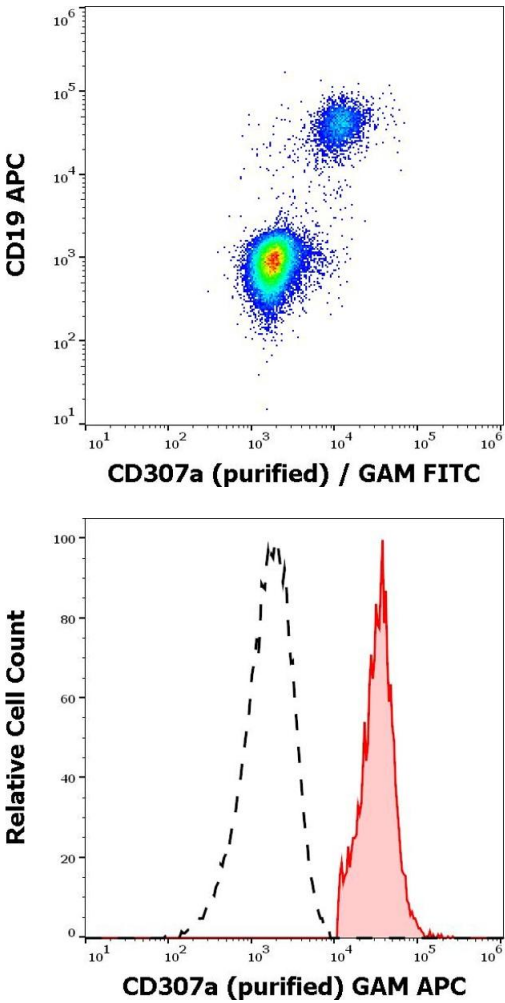
Concentration:	1 mg/mL
Buffer:	Phosphate buffered saline (PBS), pH 7.4, 15 mM sodium azide
Preservative:	Sodium azide
Precaution of Use:	This product contains Sodium azide: a POISONOUS AND HAZARDOUS SUBSTANCE which should be handled by trained staff only.
Storage:	4 °C
Storage Comment:	Store at 2-8°C. Do not freeze.

Images



Flow Cytometry

Image 1. Flow cytometry surface staining pattern of human peripheral whole blood stained using anti-human CD307e (E3) purified antibody (concentration in sample 0,6 µg/mL, GAM APC).



Flow Cytometry

Image 2. Flow cytometry multicolor surface staining of human lymphocytes stained using anti-human CD19 (LT19) APC antibody (10 μ L reagent / 100 μ L of peripheral whole blood) and anti-human CD307a (E3) purified antibody (5 μ g/mL, GAM-FITC).

Flow Cytometry

Image 3. Separation of human CD307a positive lymphocytes (red-filled) from CD307a negative lymphocytes (black-dashed) in flow cytometry analysis (surface staining) of human peripheral whole blood stained using anti-human CD307e (E3) purified antibody (concentration in sample 0,6 μ g/mL, GAM APC).