

Datasheet for ABIN7505901  
**anti-FCRL1 antibody (PE)**

## 3 Images

[Go to Product page](#)

## Overview

Quantity:	100 tests
Target:	FCRL1
Reactivity:	Human
Host:	Mouse
Clonality:	Monoclonal
Conjugate:	This FCRL1 antibody is conjugated to PE
Application:	Flow Cytometry (FACS)

## Product Details

Purpose:	Anti-Hu CD307a PE
Immunogen:	DNA-immunization followed by a boost with the CD307a transfected cells
Clone:	E3
Isotype:	IgG1 kappa
Specificity:	The mouse monoclonal antibody E3 recognizes an extracellular epitope of CD307a, a transmembrane glycoprotein expressed predominantly on the surface of mature B cells.
Purification:	Purified antibody is conjugated with R-phycoerythrin (PE) under optimum conditions. Unconjugated antibody and free fluorochrome are removed by size-exclusion chromatography.

## Target Details

Target:	FCRL1
---------	-------

## Target Details

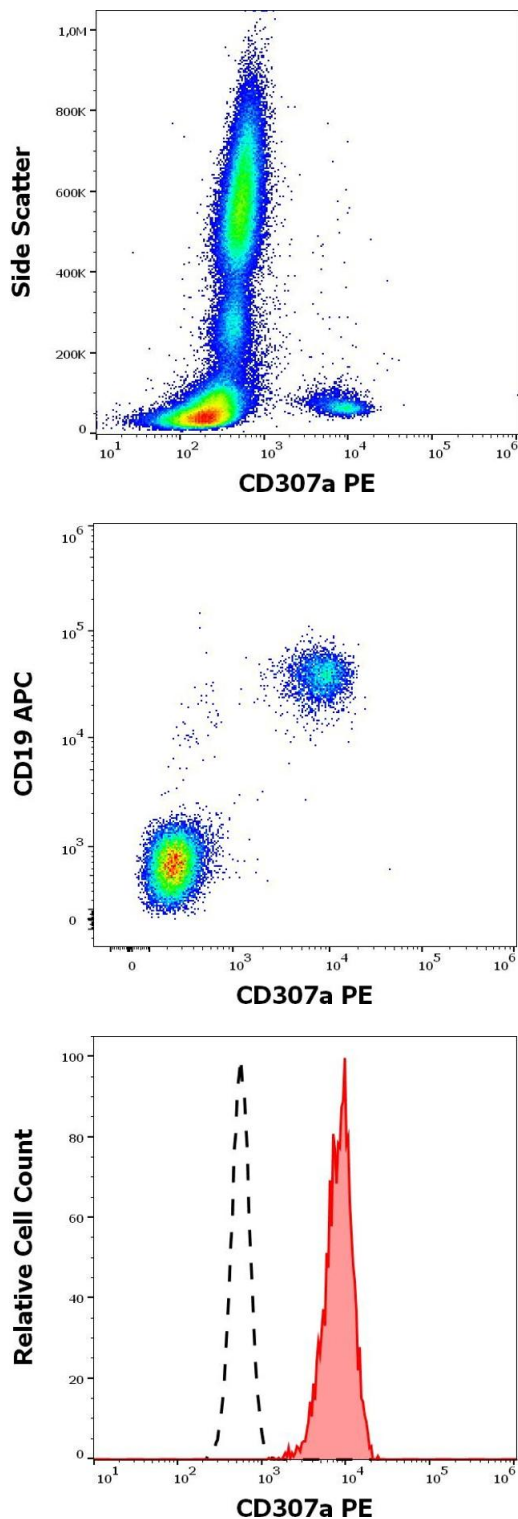
Alternative Name:	CD307a ( <a href="#">FcRL1 Products</a> )
Background:	Fc receptor like 1,CD307a is a type I transmembrane glycoprotein of the Fc receptor family. It contains two ITAM motifs in its cytoplasmic domain. CD307a is expressed mainly on the surface of mature B-cells, and is down-regulated in germinal center B-cells. Expression of CD307a is higher in patients with autoimmune diseases, compared with healthy controls.,FcRL1, FcRH1, IRTA5
Gene ID:	115350
UniProt:	<a href="#">Q96LA6</a>

## Application Details

Application Notes:	Flow cytometry: The reagent is designed for analysis of human blood cells using 10 µL reagent / 100 µL of whole blood or 10 <sup>6</sup> cells in a suspension. The content of a vial (1 ml) is sufficient for 100 tests.
Restrictions:	For Research Use only

## Handling

Buffer:	Stabilizing phosphate buffered saline (PBS), pH 7.4, 15 mM sodium azide
Preservative:	Sodium azide
Precaution of Use:	This product contains Sodium azide: a POISONOUS AND HAZARDOUS SUBSTANCE which should be handled by trained staff only.
Storage:	4 °C
Storage Comment:	Store at 2-8°C. Protect from prolonged exposure to light. Do not freeze.



### Flow Cytometry

**Image 1.** Flow cytometry surface staining pattern of human peripheral whole blood stained using anti-human CD307a (E3) PE antibody (10  $\mu$ L reagent / 100  $\mu$ L of peripheral whole blood).

### Flow Cytometry

**Image 2.** Flow cytometry multicolor surface staining of human lymphocytes stained using anti-human CD307a(E3) PE antibody (10  $\mu$ L reagent / 100  $\mu$ L of peripheral whole blood) and anti-human CD19 (4G7) APC antibody (10  $\mu$ L reagent / 100  $\mu$ L of peripheral whole blood).

### Flow Cytometry

**Image 3.** Separation of human CD19 positive B cells (red-filled) from neutrophil granulocytes (black-dashed) in flow cytometry analysis (surface staining) of human peripheral whole blood stained using anti-human CD307a (E3) PE antibody (10  $\mu$ L reagent / 100  $\mu$ L of peripheral whole blood).