

Datasheet for ABIN7505903
anti-FCRL2 antibody (PE)

3 Images

[Go to Product page](#)

Overview

Quantity:	100 tests
Target:	FCRL2
Reactivity:	Human
Host:	Mouse
Clonality:	Monoclonal
Conjugate:	This FCRL2 antibody is conjugated to PE
Application:	Flow Cytometry (FACS)

Product Details

Purpose:	Anti-Hu CD307b PE
Immunogen:	DNA-immunization followed by a boost with CD307b transfected cells
Clone:	B24
Isotype:	IgG2a kappa
Specificity:	The mouse monoclonal antibody B24 recognizes an extracellular epitope of CD307b, a transmembrane glycoprotein expressed mainly in mature and memory B cells.
Purification:	Purified antibody is conjugated with R-phycoerythrin (PE) under optimum conditions. Unconjugated antibody and free fluorochrome are removed by size-exclusion chromatography.

Target Details

Target:	FCRL2
---------	-------

Target Details

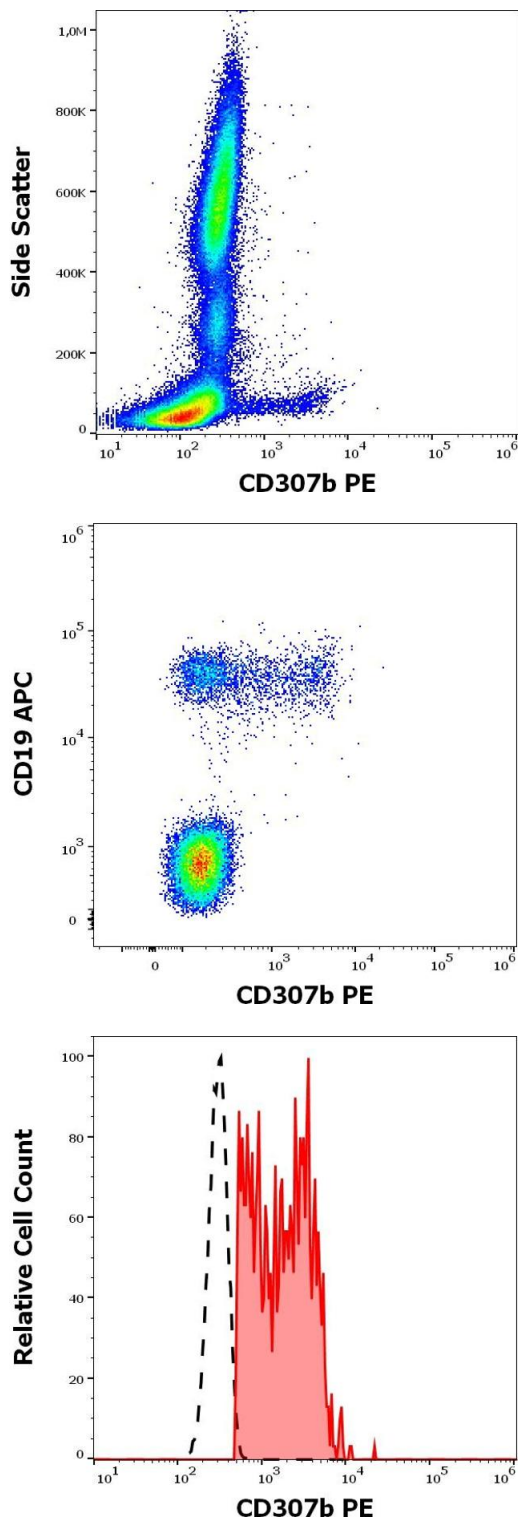
Alternative Name:	CD307b (FCRL2 Products)
Background:	Fc receptor like 2,CD307b is a type I transmembrane glycoprotein of the Fc receptor family. It contains one ITAM motif and two ITIM motifs in its cytoplasmic domain. It is expressed in spleen and lymph nodes in mature B cells and memory B cells. CD307b may be a prognostic marker for chronic lymphocytic leukemia.,FcRL2, FcRH2, IFGP4, IRTA4, SPAP1
Gene ID:	79368
UniProt:	Q96LA5

Application Details

Application Notes:	Flow cytometry: The reagent is designed for analysis of human blood cells using 10 µL reagent / 100 µL of whole blood or 10 ⁶ cells in a suspension. The content of a vial (1 ml) is sufficient for 100 tests.
Restrictions:	For Research Use only

Handling

Buffer:	Stabilizing phosphate buffered saline (PBS), pH 7.4, 15 mM sodium azide
Preservative:	Sodium azide
Precaution of Use:	This product contains Sodium azide: a POISONOUS AND HAZARDOUS SUBSTANCE which should be handled by trained staff only.
Storage:	4 °C
Storage Comment:	Store at 2-8°C. Protect from prolonged exposure to light. Do not freeze.



Flow Cytometry

Image 1. Flow cytometry surface staining pattern of human peripheral whole blood stained using anti-human CD307b (B24) PE antibody (10 μ L reagent / 100 μ L of peripheral whole blood).

Flow Cytometry

Image 2. Flow cytometry multicolor surface staining of human lymphocytes stained using anti-human CD307b(B24) PE antibody (10 μ L reagent / 100 μ L of peripheral whole blood) and anti-human CD19 (LT19) APC antibody (10 μ L reagent / 100 μ L of peripheral whole blood).

Flow Cytometry

Image 3. Separation of human CD19 positive B cells (red-filled) from neutrophil granulocytes (black-dashed) in flow cytometry analysis (surface staining) of human peripheral whole blood stained using anti-human CD307b (B24) PE antibody (10 μ L reagent / 100 μ L of peripheral whole blood).