

Datasheet for ABIN7505910

anti-IGSF8 antibody**2** Images[Go to Product page](#)

Overview

Quantity:	0.1 mg
Target:	IGSF8
Reactivity:	Human
Host:	Mouse
Clonality:	Monoclonal
Application:	Western Blotting (WB), Flow Cytometry (FACS), Immunohistochemistry (Frozen Sections) (IHC (fro)), Immunoprecipitation (IP)

Product Details

Purpose:	Anti-Hu CD316 Purified
Immunogen:	human leukocytes
Clone:	8A12
Isotype:	IgG2a
Specificity:	The mouse monoclonal antibody 8A12 recognizes an extracellular epitope of CD316, a type I transmembrane glycoprotein, expressed mainly by lymphocytes, NK cells and in a broad range of tissues.
Purification:	Purified by protein-A affinity chromatography.

Target Details

Target:	IGSF8
Alternative Name:	CD316 (IGSF8 Products)

Target Details

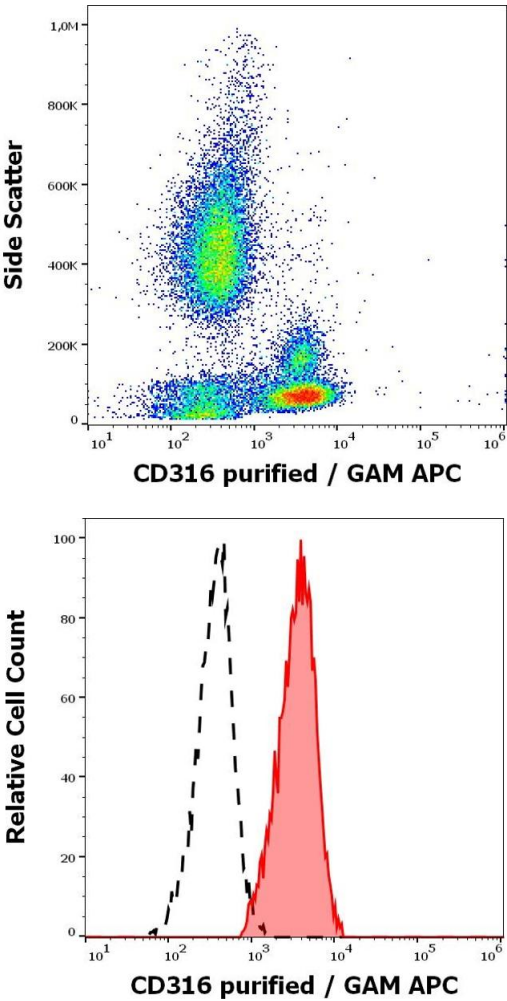
Background:	Immunoglobulin superfamily member 8,CD316 is an approximately 63 kDa transmembrane glycoprotein, which forms stable complexes with CD9, as well as with CD81. It seems that CD316 participates in regulation of cell polarity and motility, in cell proliferation, oocyte fertilization and tumor cell metastasis. It is expressed mainly by lymphocytes, NK cells and in a broad range of tissues, and associates with actin cytoskeleton.,EWI2, PGRL, KCT-4, LIR-D1, IGSF8
Gene ID:	93185
UniProt:	Q969P0

Application Details

Application Notes:	Flow cytometry: Recommended dilution: 1-5 µg/mL
Restrictions:	For Research Use only

Handling

Concentration:	1 mg/mL
Buffer:	Phosphate buffered saline (PBS), pH 7.4, 15 mM sodium azide
Preservative:	Sodium azide
Precaution of Use:	This product contains Sodium azide: a POISONOUS AND HAZARDOUS SUBSTANCE which should be handled by trained staff only.
Storage:	4 °C
Storage Comment:	Store at 2-8°C. Do not freeze.



Flow Cytometry

Image 1. Flow cytometry surface staining pattern of human peripheral whole blood stained using anti-human CD316 (8A12) purified antibody (concentration in sample 5 µg/mL, GAM APC).

Flow Cytometry

Image 2. Separation of human lymphocytes (red-filled) from neutrophil granulocytes (black-dashed) in flow cytometry analysis (surface staining) of human peripheral whole blood stained using anti-human CD316 (8A12) purified antibody (concentration in sample 5 µg/mL, GAM APC).