

Datasheet for ABIN7505911  
**anti-IGSF8 antibody (PE)**[Go to Product page](#)

## 2 Images

## Overview

Quantity:	100 tests
Target:	IGSF8
Reactivity:	Human
Host:	Mouse
Clonality:	Monoclonal
Conjugate:	This IGSF8 antibody is conjugated to PE
Application:	Flow Cytometry (FACS)

## Product Details

Purpose:	Anti-Hu CD316 PE
Immunogen:	human leukocytes
Clone:	8A12
Isotype:	IgG2a
Specificity:	The mouse monoclonal antibody 8A12 recognizes an extracellular epitope of CD316, a type I transmembrane glycoprotein, expressed mainly by lymphocytes, NK cells and in a broad range of tissues.
Purification:	Purified antibody is conjugated with R-phycoerythrin (PE) under optimum conditions. Unconjugated antibody and free fluorochrome are removed by size-exclusion chromatography.

## Target Details

Target:	IGSF8
---------	-------

## Target Details

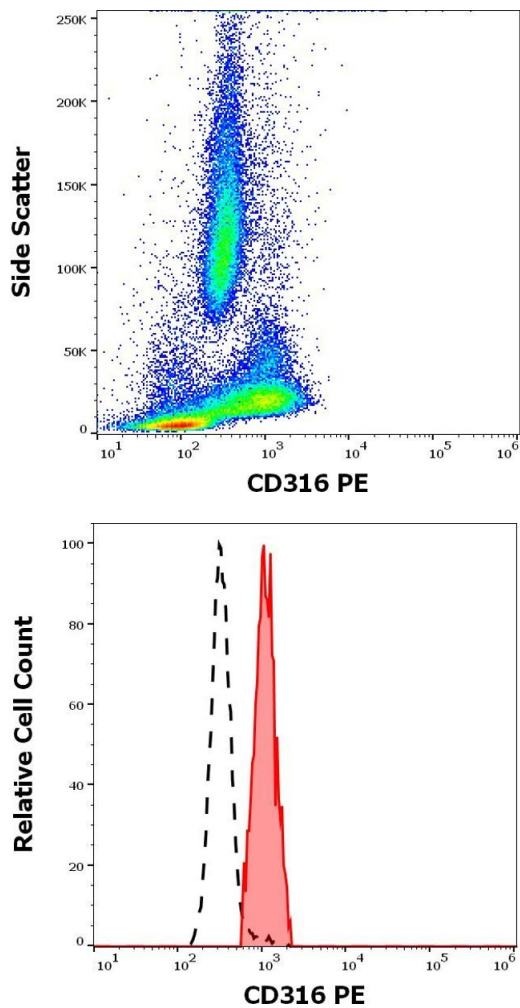
Alternative Name:	CD316 ( <a href="#">IGSF8 Products</a> )
Background:	Immunoglobulin superfamily member 8,CD316 is an approximately 63 kDa transmembrane glycoprotein, which forms stable complexes with CD9, as well as with CD81. It seems that CD316 participates in regulation of cell polarity and motility, in cell proliferation, oocyte fertilization and tumor cell metastasis. It is expressed mainly by lymphocytes, NK cells and in a broad range of tissues, and associates with actin cytoskeleton.,EWI2, PGRL, KCT-4, LIR-D1, IGSF8
Gene ID:	93185
UniProt:	<a href="#">Q969P0</a>

## Application Details

Application Notes:	Flow cytometry: The reagent is designed for analysis of human blood cells using 10 µL reagent / 100 µL of whole blood or 10 <sup>6</sup> cells in a suspension. The content of a vial (1 ml) is sufficient for 100 tests.
Restrictions:	For Research Use only

## Handling

Buffer:	Stabilizing phosphate buffered saline (PBS), pH 7.4, 15 mM sodium azide
Preservative:	Sodium azide
Precaution of Use:	This product contains Sodium azide: a POISONOUS AND HAZARDOUS SUBSTANCE which should be handled by trained staff only.
Storage:	4 °C
Storage Comment:	Store at 2-8°C. Protect from prolonged exposure to light. Do not freeze.



### Flow Cytometry

**Image 1.** Flow cytometry surface staining pattern of human peripheral whole blood stained using anti-human CD316 (8A12) PE antibody (10  $\mu$ L reagent / 100  $\mu$ L of peripheral whole blood).

### Flow Cytometry

**Image 2.** Separation of human monocytes (red-filled) from neutrophil granulocytes (black-dashed) in flow cytometry analysis (surface staining) of human peripheral whole blood stained using anti-human CD316 (8A12) PE antibody (10  $\mu$ L reagent / 100  $\mu$ L of peripheral whole blood).