

Datasheet for ABIN7505918  
**anti-FZD4 antibody (PE)**



[Go to Product page](#)

1 Image

## Overview

Quantity:	100 tests
Target:	FZD4
Reactivity:	Human, Non-Human Primate
Host:	Mouse
Clonality:	Monoclonal
Conjugate:	This FZD4 antibody is conjugated to PE
Application:	Flow Cytometry (FACS)

## Product Details

Purpose:	Anti-Hu CD344 PE
Immunogen:	WERI-RB-1 retinoblastoma cells
Clone:	CH3A4A7
Isotype:	IgG1 kappa
Specificity:	The mouse monoclonal antibody CH3A4A7 recognizes an extracellular epitope of CD344 (Frizzled 4), a 7-TM protein of G-protein-coupled receptor family, which is a marker for neuronal stem cells.
Purification:	Purified antibody is conjugated with R-phycoerythrin (PE) under optimum conditions. Unconjugated antibody and free fluorochrome are removed by size-exclusion chromatography.

## Target Details

Target:	FZD4
---------	------

## Target Details

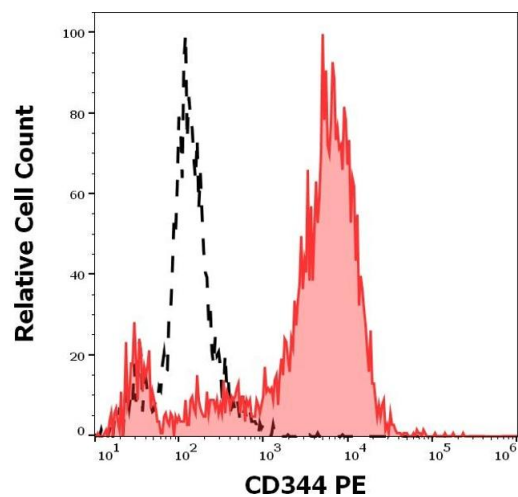
Alternative Name:	CD344 ( <a href="#">FZD4 Products</a> )
Background:	Frizzled class receptor 4,CD344 (Frizzled class receptor 4) is a G-protein coupled 7-TM protein, predominantly expressed in fetal neuronal progenitor cells, neuronal intestinal cells, as well as in the kidney, lung, brain, and liver. CD344 is important for regulation of cell polarity, proliferation, and tissue development. Defects in CD344 expression, or its mutation, lead e.g. to serious failures in retinal vascularization, defects in cerebellum, progressive hearing loss, or impaired corpora lutea formation and function.,Frizzled-4, FZD4, EVR1, FEVR, GPCR
Gene ID:	8322
UniProt:	<a href="#">Q9ULV1</a>
Pathways:	<a href="#">WNT Signaling</a> , <a href="#">Hormone Transport</a> , <a href="#">Sensory Perception of Sound</a>

## Application Details

Application Notes:	Flow cytometry: The reagent is designed for analysis of human blood cells using 10 µL reagent / 100 µL of whole blood or 10 <sup>6</sup> cells in a suspension. The content of a vial (1 ml) is sufficient for 100 tests.
Restrictions:	For Research Use only

## Handling

Buffer:	Stabilizing phosphate buffered saline (PBS), pH 7.4, 15 mM sodium azide
Preservative:	Sodium azide
Precaution of Use:	This product contains Sodium azide: a POISONOUS AND HAZARDOUS SUBSTANCE which should be handled by trained staff only.
Storage:	4 °C
Storage Comment:	Store at 2-8°C. Protect from prolonged exposure to light. Do not freeze.



### Flow Cytometry

**Image 1.** Separation of HeLa cells stained using anti-human CD344 (CH3A4A7) PE antibody (10  $\mu$ L reagent per million cells in 100  $\mu$ L of cell suspension, red-filled) from HeLa cells stained using mouse IgG1 isotype control (MOPC-21) PE antibody (concentration in sample 5  $\mu$ g/mL, same as CD344 PE concentration, black-dashed) in flow cytometry analysis (surface staining) of HeLa cell suspension.