

Datasheet for ABIN7505919
anti-SLAMF6 antibody (PE)[Go to Product page](#)

2 Images

Overview

Quantity:	100 tests
Target:	SLAMF6
Reactivity:	Human
Host:	Mouse
Clonality:	Monoclonal
Conjugate:	This SLAMF6 antibody is conjugated to PE
Application:	Flow Cytometry (FACS)

Product Details

Purpose:	Anti-Hu CD352 PE
Immunogen:	CD352 transfectants
Clone:	HsF6-4-20
Isotype:	IgG1
Specificity:	The mouse monoclonal antibody hSF6.4.20 recognizes an extracellular epitope of CD352, a transmembrane glycoprotein expressed on NK, T and B cells.
Purification:	Purified antibody is conjugated with R-phycoerythrin (PE) under optimum conditions. Unconjugated antibody and free fluorochrome are removed by size-exclusion chromatography.

Target Details

Target:	SLAMF6
---------	--------

Target Details

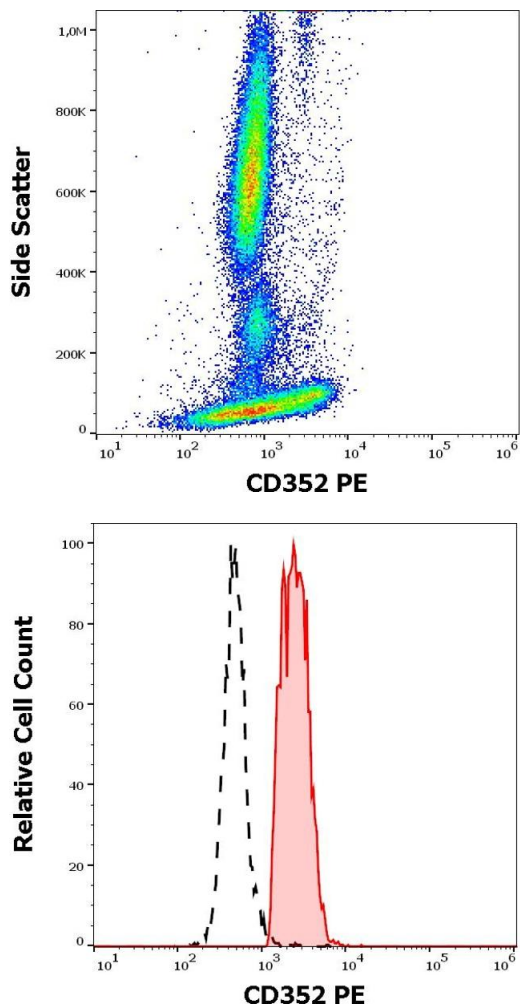
Alternative Name:	CD352 (SLAMF6 Products)
Background:	SLAM family member 6,CD352, also known as SLAMF6 (SLAM family member 6) is a type I transmembrane glycoprotein expressed on NK cells, T cells, and B cells, and serves as a coreceptor for them. Besides association of its tyrosine phosphorylated intracellular domain with SH2D1A protein, it associates also with SH2 domain-containing phosphatases, which can modulate the signaling. Multiple CD352 isoforms have been identified.,SLAMF6, KALI, NTBA, Ly108, SF2000
Gene ID:	114836
UniProt:	Q96DU3

Application Details

Application Notes:	Flow cytometry: The reagent is designed for analysis of human blood cells using 10 µL reagent / 100 µL of whole blood or 10 ⁶ cells in a suspension. The content of a vial (1 ml) is sufficient for 100 tests.
Restrictions:	For Research Use only

Handling

Buffer:	Stabilizing phosphate buffered saline (PBS), pH 7.4, 15 mM sodium azide
Preservative:	Sodium azide
Precaution of Use:	This product contains Sodium azide: a POISONOUS AND HAZARDOUS SUBSTANCE which should be handled by trained staff only.
Storage:	4 °C
Storage Comment:	Store at 2-8°C. Protect from prolonged exposure to light. Do not freeze.



Flow Cytometry

Image 1. Flow cytometry surface staining pattern of human peripheral whole blood stained using anti-human CD352 (hsF6.4.20) PE antibody (10 μ L reagent / 100 μ L of peripheral whole blood).

Flow Cytometry

Image 2. Separation of human CD352 positive lymphocytes (red-filled) from monocytes (black-dashed) in flow cytometry analysis (surface staining) of human peripheral whole blood stained using anti-human CD352 (hsF6.4.20) PE antibody (10 μ L reagent / 100 μ L of peripheral whole blood).