



[Go to Product page](#)

Datasheet for ABIN7505921
anti-TREM1 antibody (PE)

2 Images

Overview

Quantity:	100 tests
Target:	TREM1
Reactivity:	Human
Host:	Mouse
Clonality:	Monoclonal
Conjugate:	This TREM1 antibody is conjugated to PE
Application:	Flow Cytometry (FACS)

Product Details

Purpose:	Anti-Hu CD354 PE
Immunogen:	recombinant human CD354 fused with IgG
Clone:	6B1
Isotype:	IgG1
Specificity:	The mouse monoclonal antibody 6B1 (also known as 6B1.1G12) recognizes an extracellular epitope of human CD354 (TREM-1), a transmembrane glycoprotein, serving as an important innate immunity receptor.
Purification:	Purified antibody is conjugated with R-phycoerythrin (PE) under optimum conditions. Unconjugated antibody and free fluorochrome are removed by size-exclusion chromatography.

Target Details

Target:	TREM1
---------	-------

Target Details

Alternative Name: CD354 ([TREM1 Products](#))

Background: Triggering receptor expressed on myeloid cells 1, CD354 (TREM-1), a cell surface glycoprotein expressed mainly on monocytes, macrophages, and neutrophils, but also on e.g. endothelial cells or bronchial epithelium, plays an important role in innate immune responses. Upon triggering by its ligands (mainly bacterial and fungal components, but also some viruses, such as Marburg or Ebola virus), it initiates signaling cascades leading to release of pro-inflammatory cytokines and chemokines. CD354 is strongly present in infectious inflammatory lesions (e.g. in folliculitis or impetigo), but not so much in non-infectious inflammatory lesions, (e.g. vasculitis or psoriasis). However, under certain conditions neutrophils can upregulate CD354 also under non-infectious inflammatory conditions, e.g. in rheumatoid arthritis. Soluble CD354 (sTREM-1) is an important biomarker for identification of septic patients, as well as for prediction of their survival., TREM-1

Gene ID: 54210

UniProt: [Q9NP99](#)

Application Details

Application Notes: Flow cytometry: The reagent is designed for analysis of human blood cells using 10 µL reagent / 100 µL of whole blood or 10⁶ cells in a suspension. The content of a vial (1 ml) is sufficient for 100 tests.

Restrictions: For Research Use only

Handling

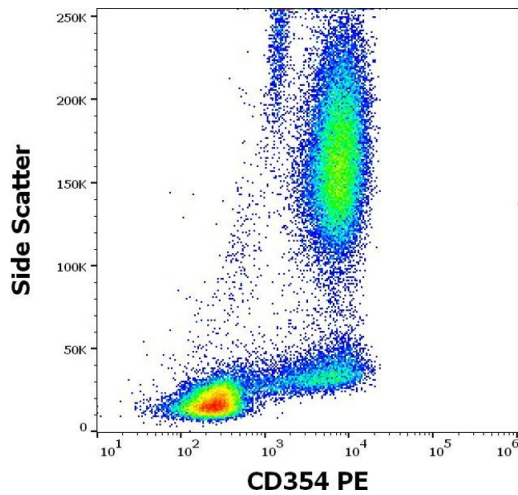
Buffer: Stabilizing phosphate buffered saline (PBS), pH 7.4, 15 mM sodium azide

Preservative: Sodium azide

Precaution of Use: This product contains Sodium azide: a POISONOUS AND HAZARDOUS SUBSTANCE which should be handled by trained staff only.

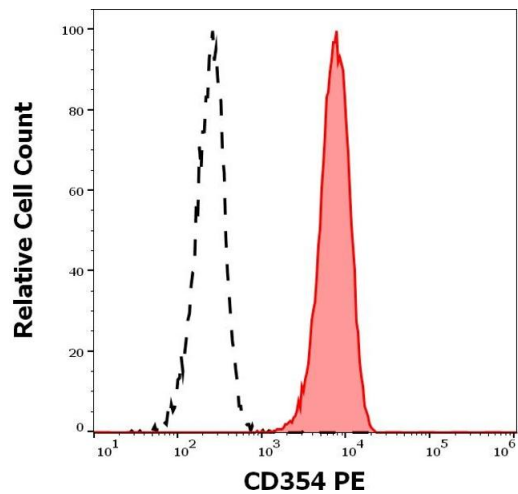
Storage: 4 °C

Storage Comment: Store at 2-8°C. Protect from prolonged exposure to light. Do not freeze.



Flow Cytometry

Image 1. Flow cytometry surface staining pattern of human peripheral whole blood stained using anti-human CD354 (6B1) PE antibody (10 μ L reagent / 100 μ L of peripheral whole blood).



Flow Cytometry

Image 2. Separation of human neutrophil granulocytes (red-filled) from lymphocytes (black-dashed) in flow cytometry analysis (surface staining) of human peripheral whole blood stained using anti-human CD354 (6B1) PE antibody (10 μ L reagent / 100 μ L of peripheral whole blood).